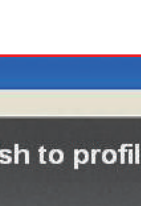


ACRORIP © V11

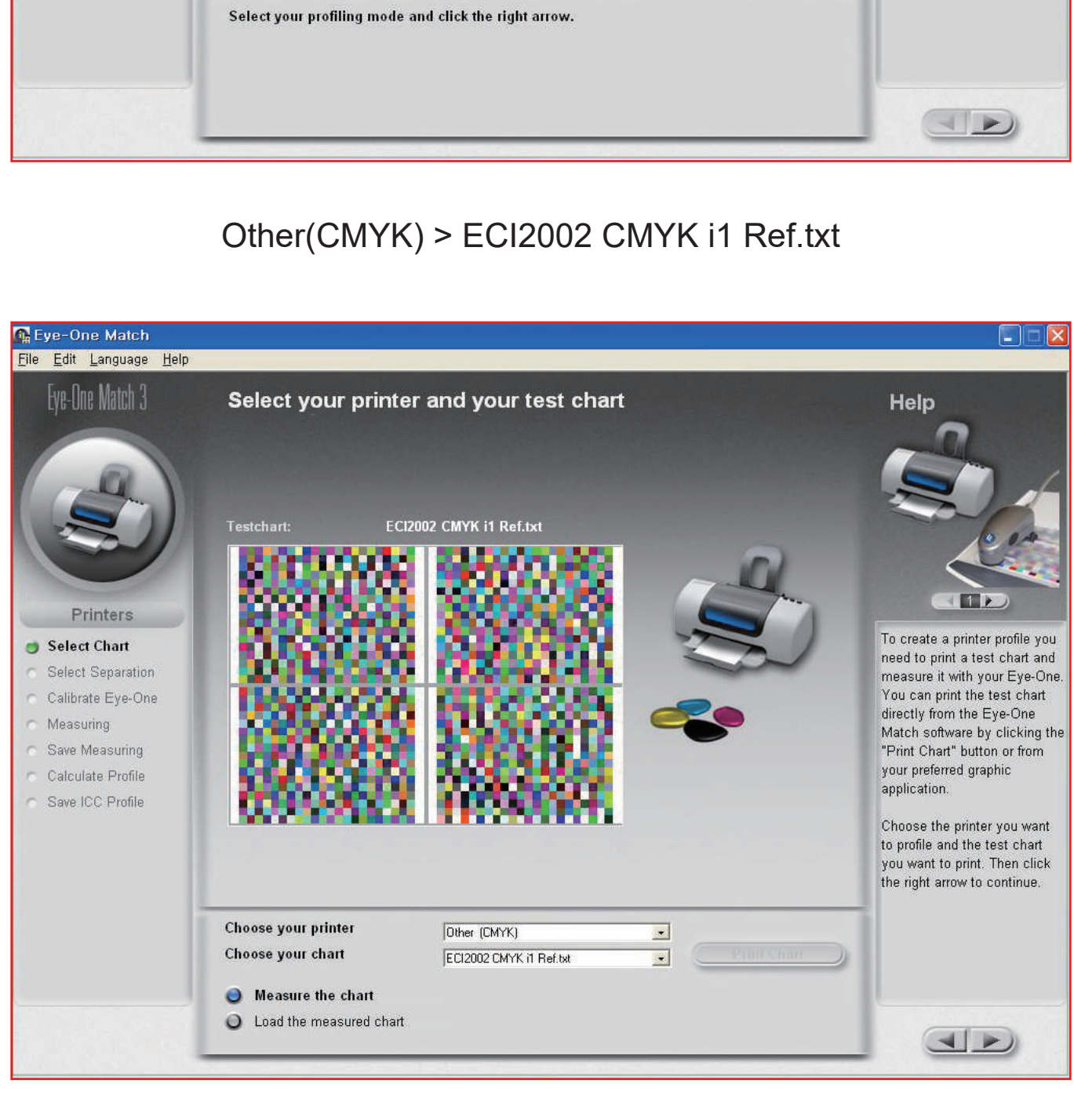
DTF RIP v11 icc profile setting method

01 Eye-One Match 3 Program setting and icc profile production

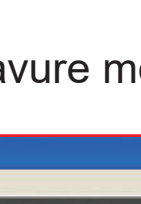
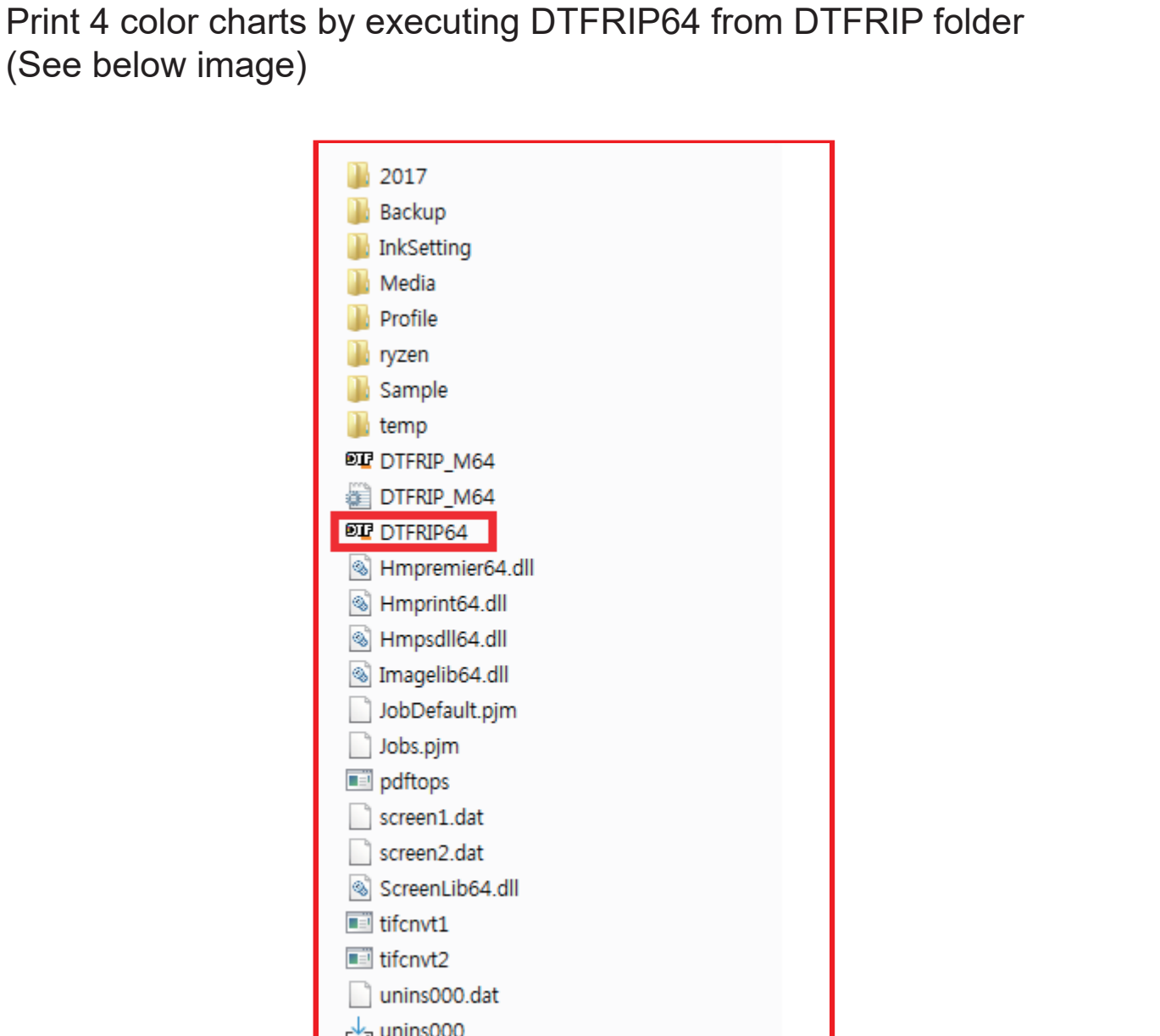


Eye-One Match 3

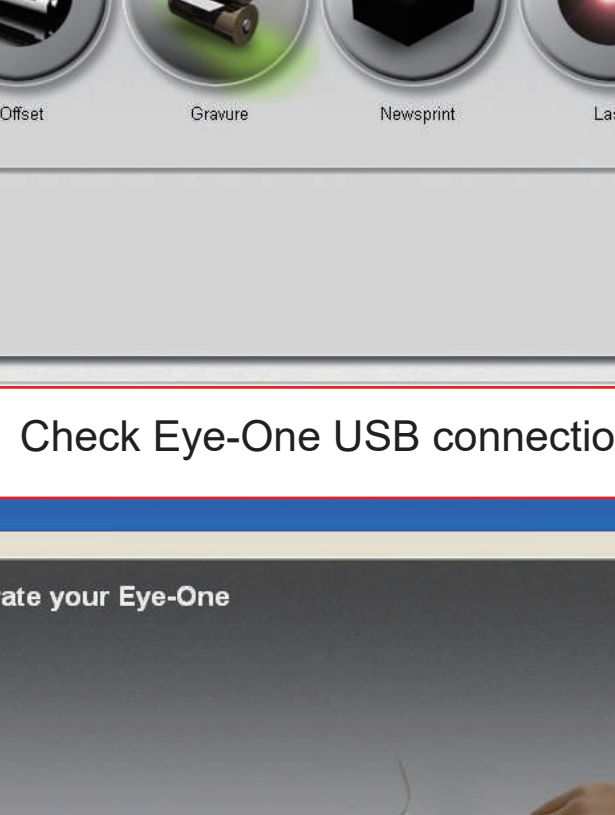
After running the program, set it to printer mode



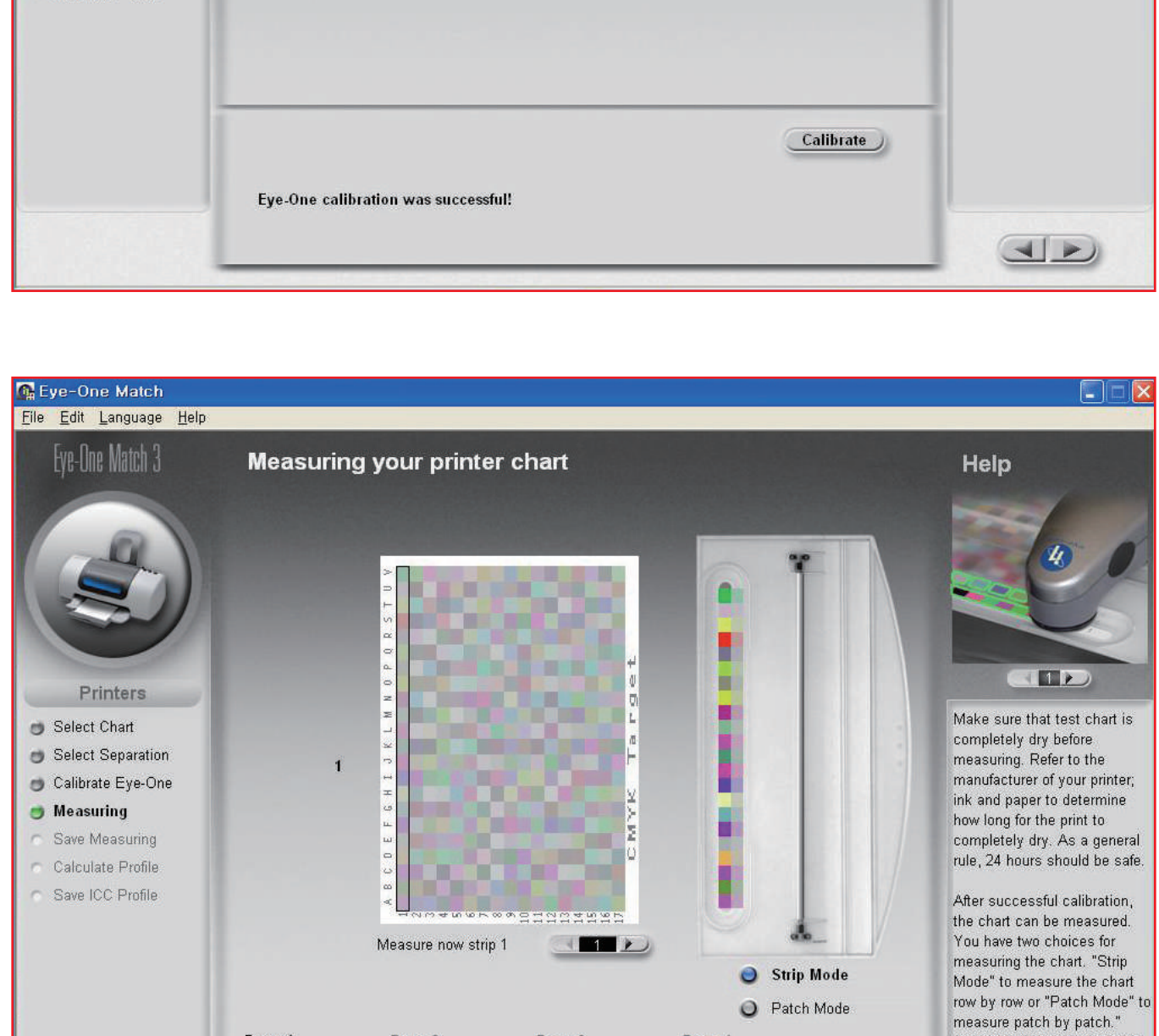
Other(CMYK) > ECI2002 CMYK i1 Ref.txt



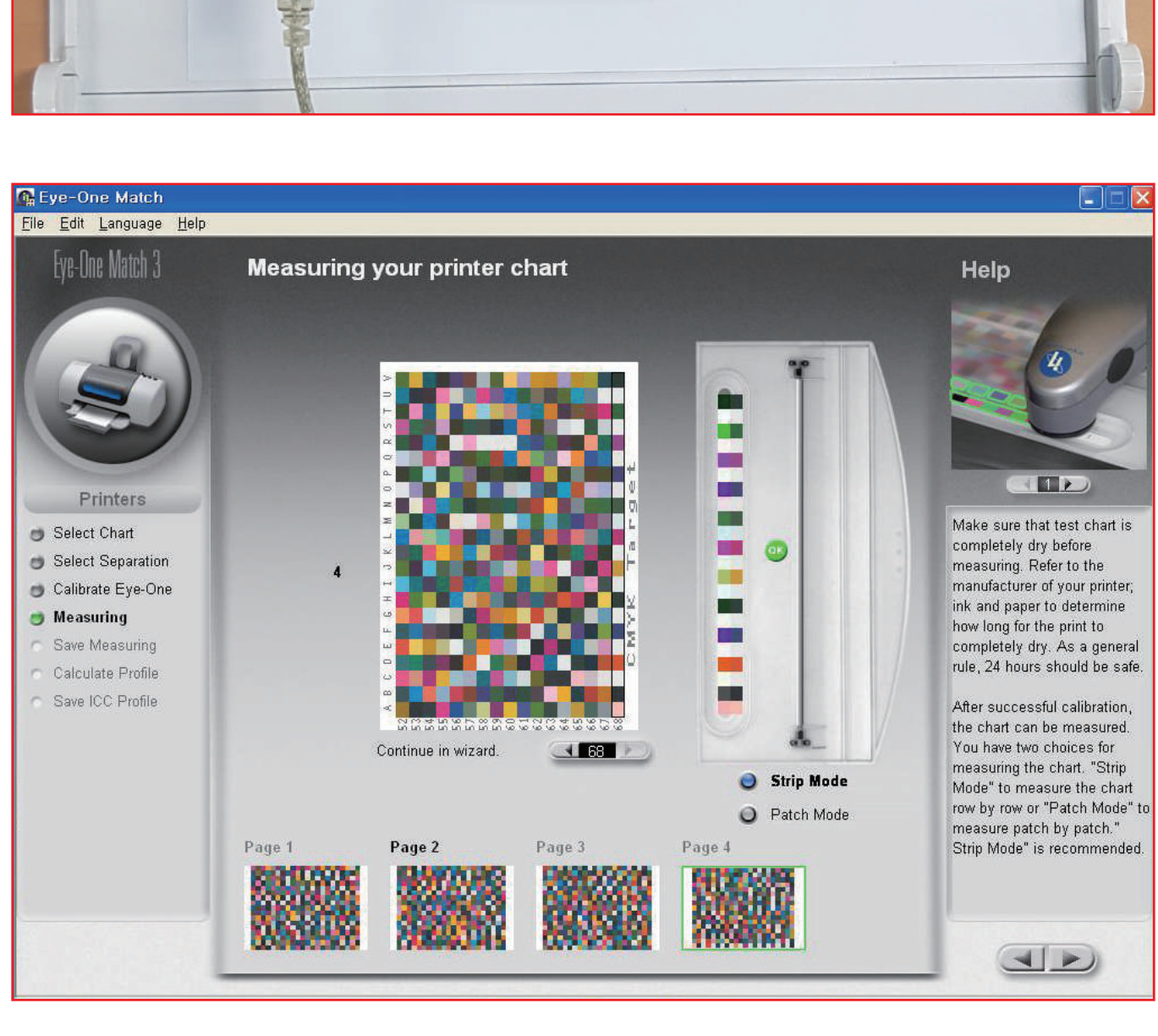
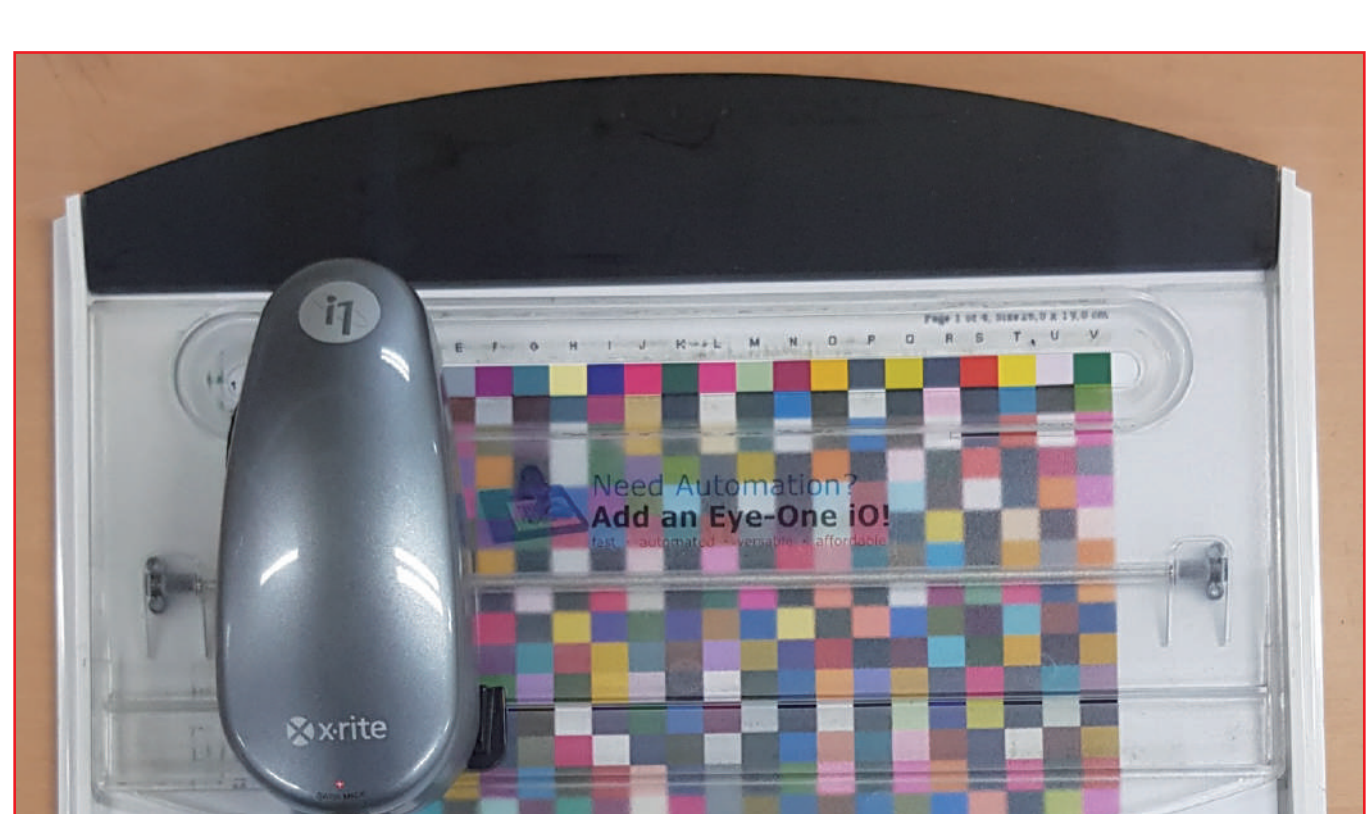
Print 4 color charts by executing DTFRIP64 from DTFRIP folder (See below image)



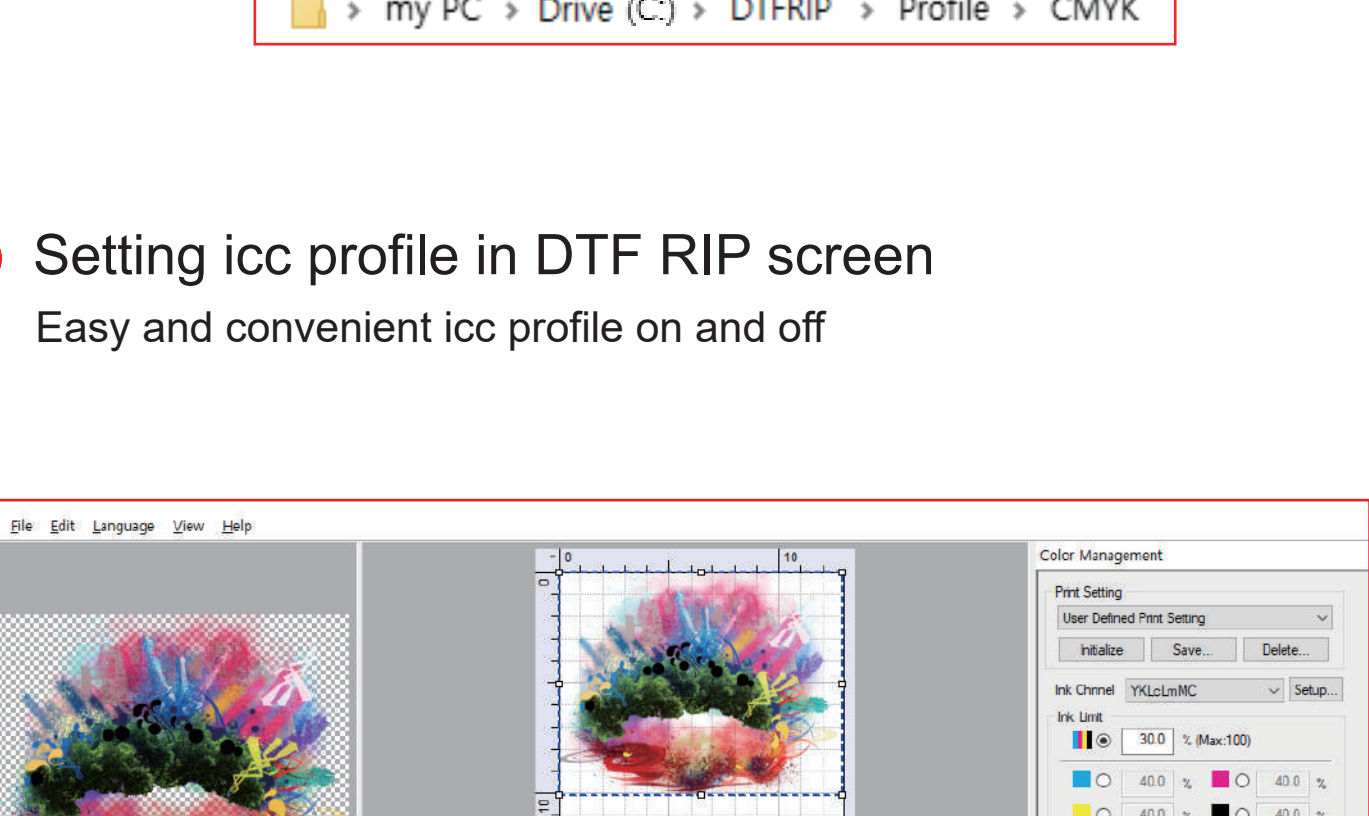
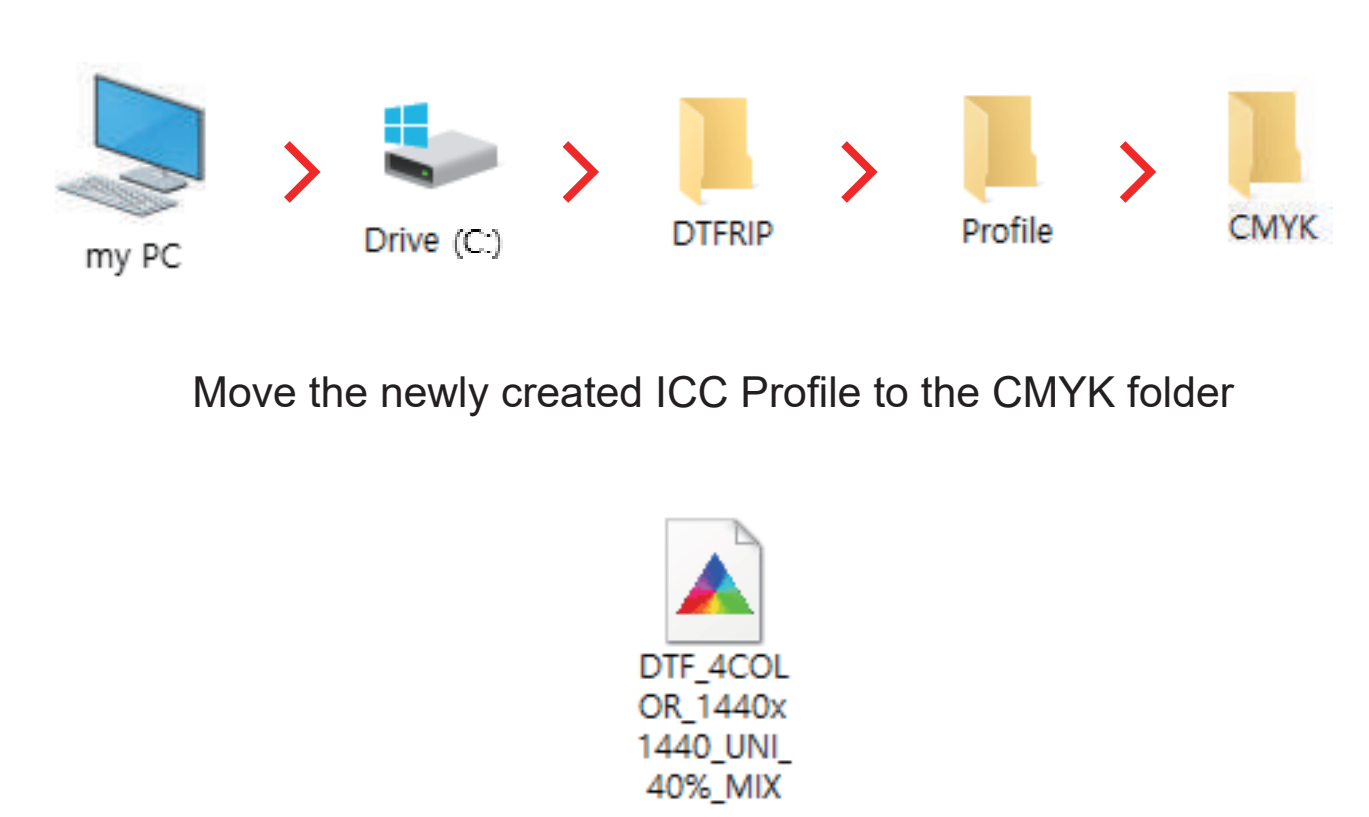
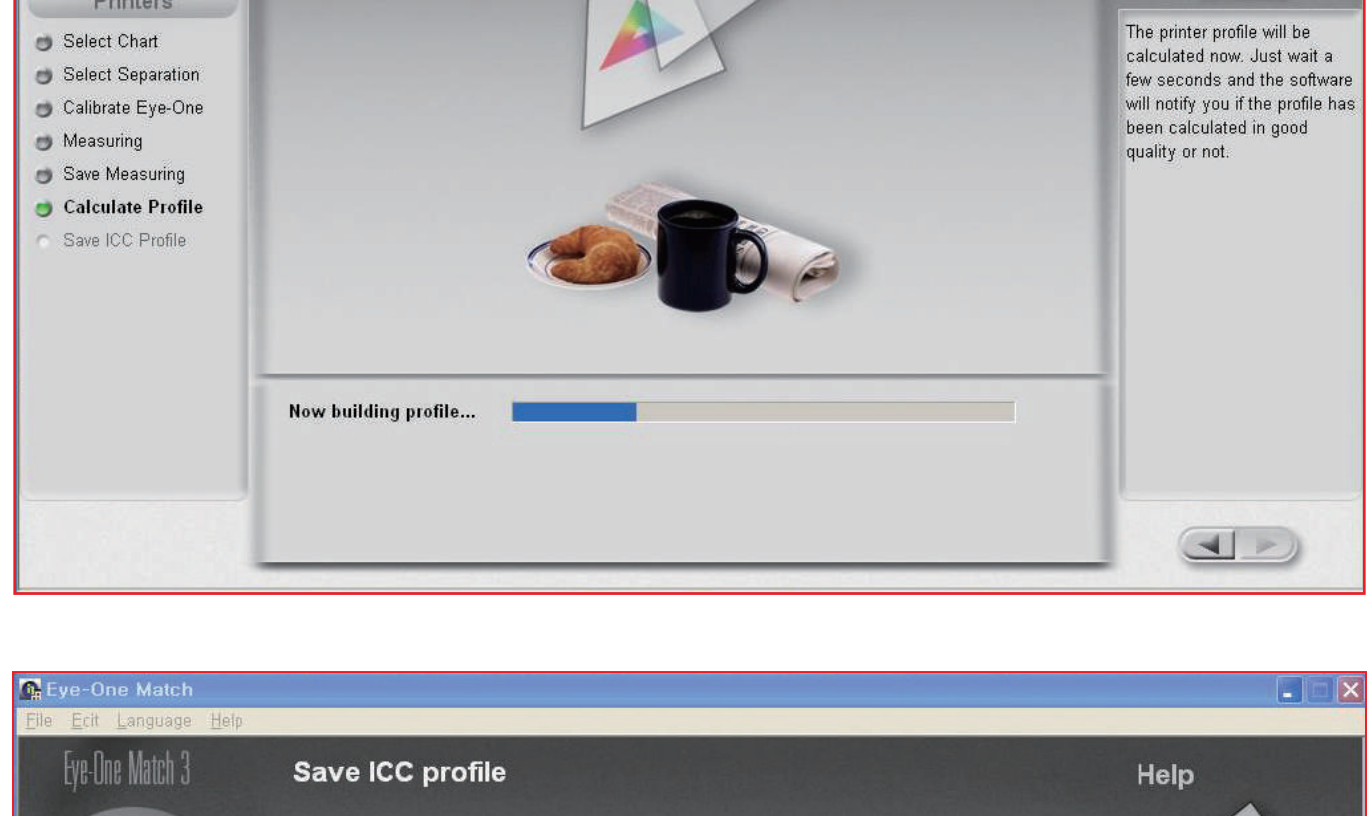
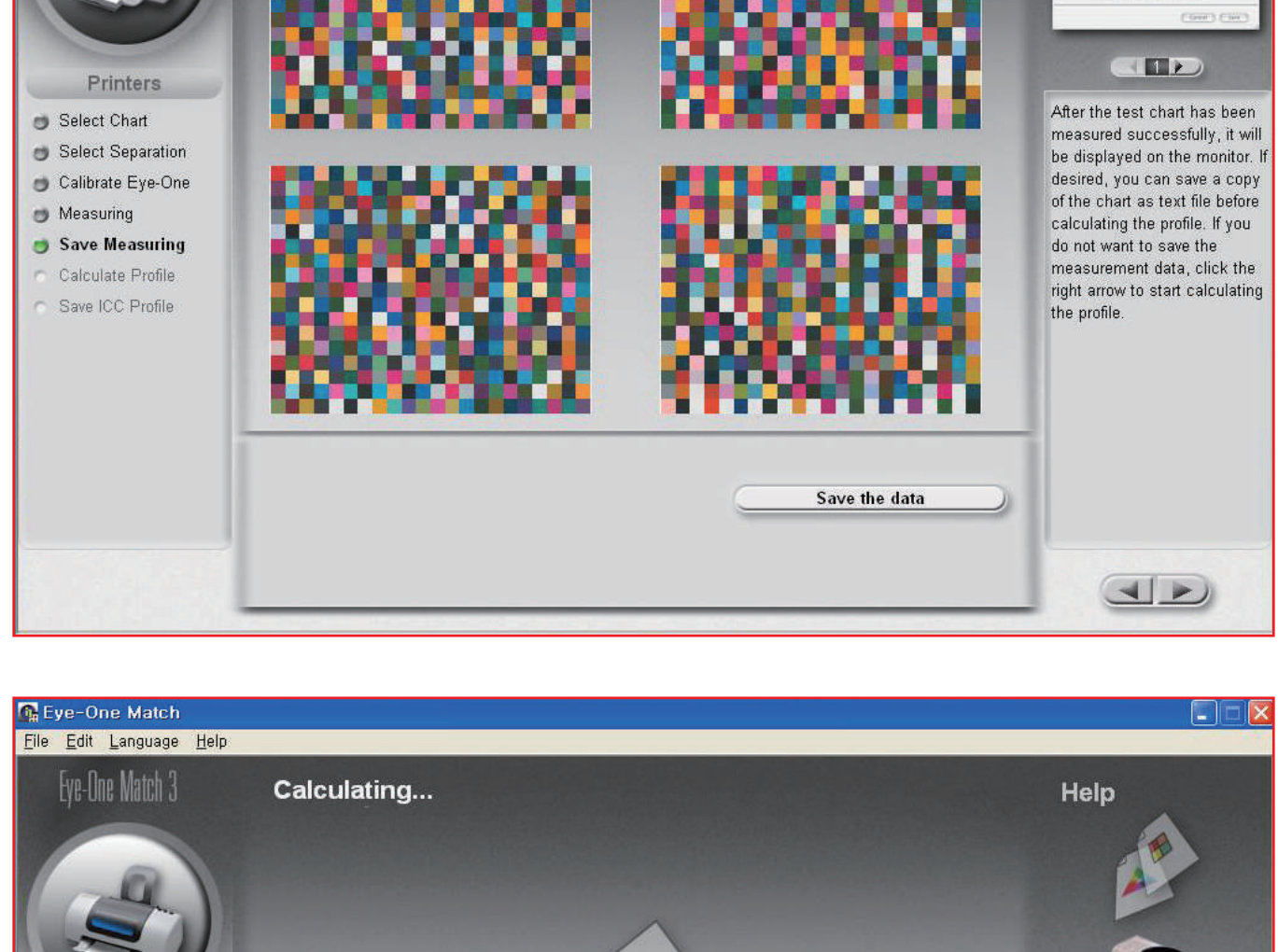
Gravure mode



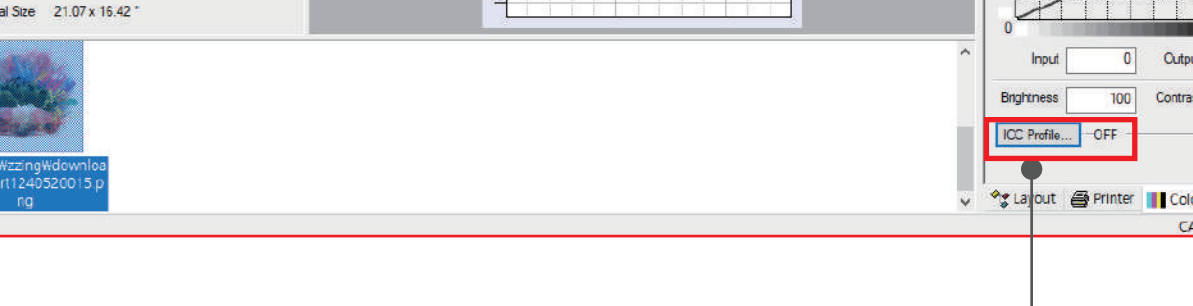
Check Eye-One USB connection



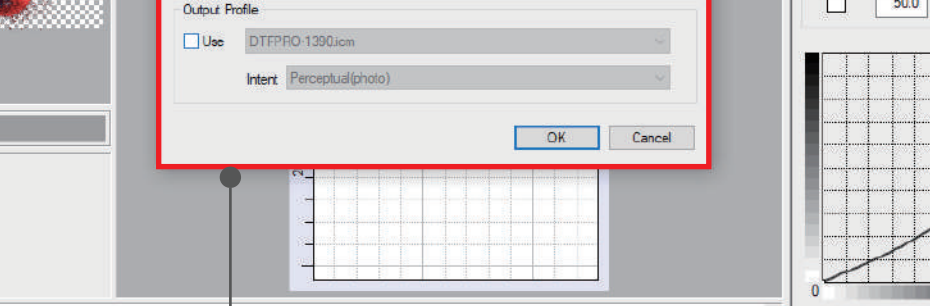
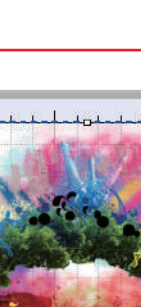
Scan the printed color chart in order.



ICC Profile storage location

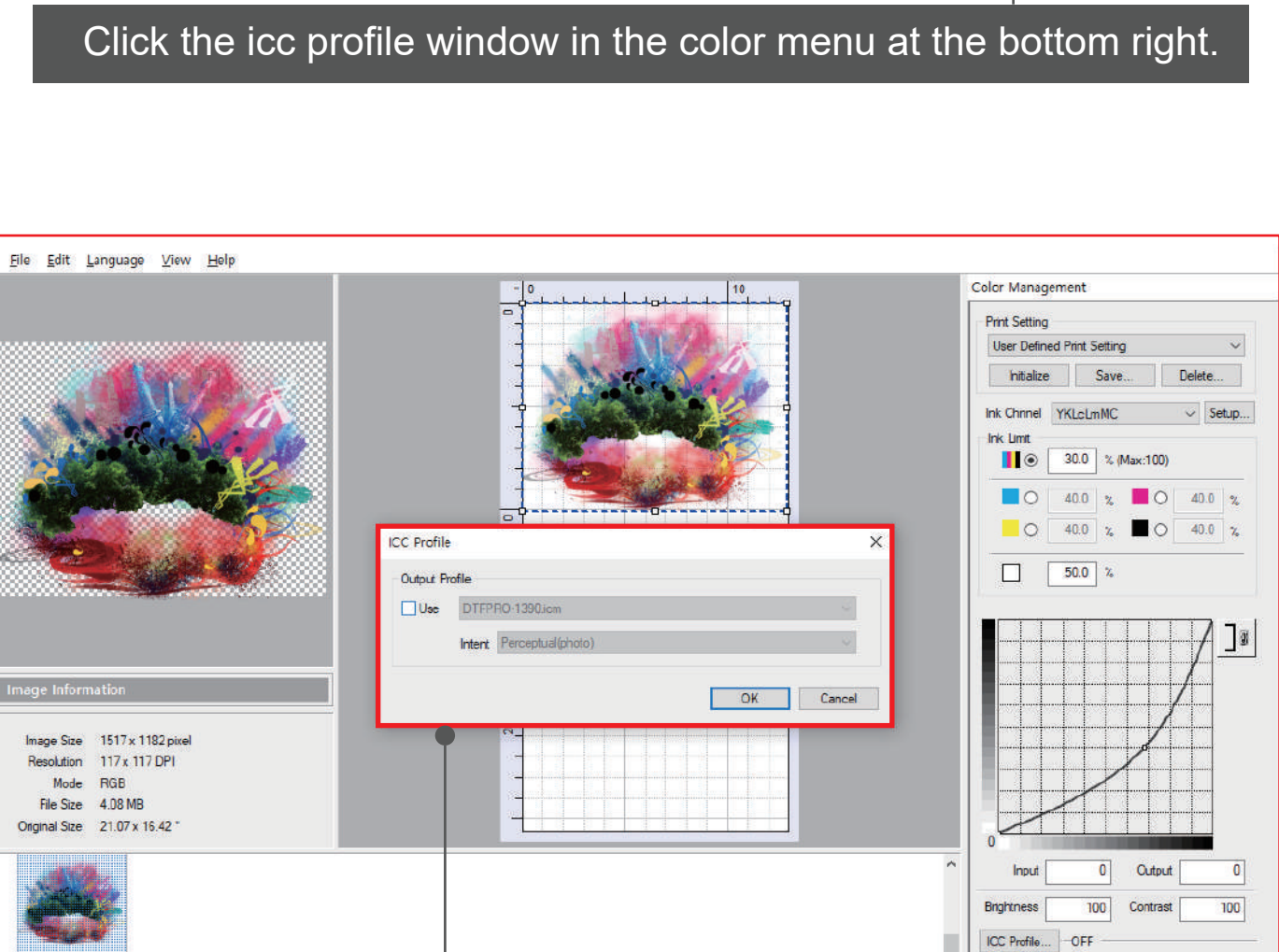


Move the newly created ICC Profile to the CMYK folder

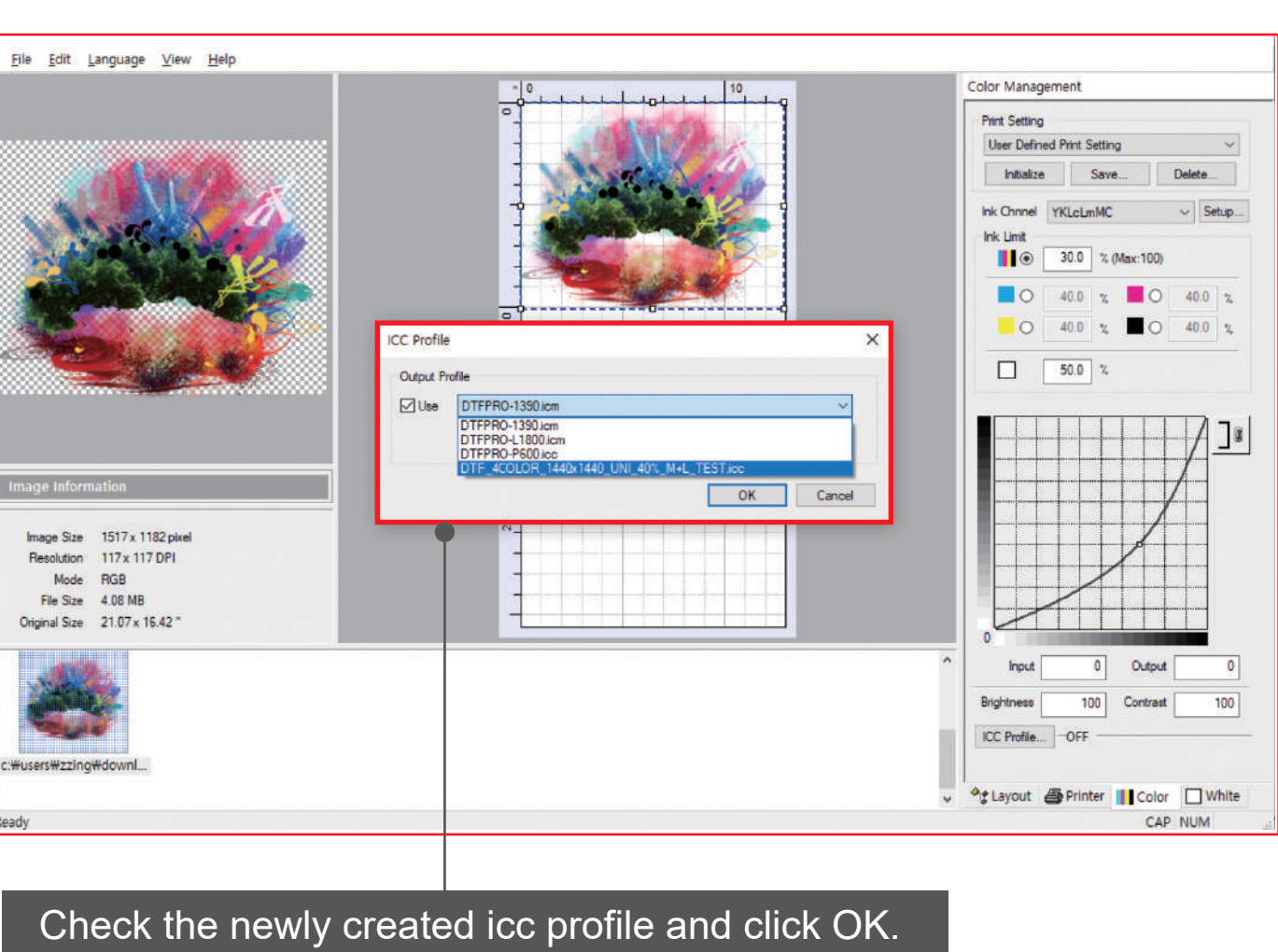


02 Setting icc profile in DTF RIP screen

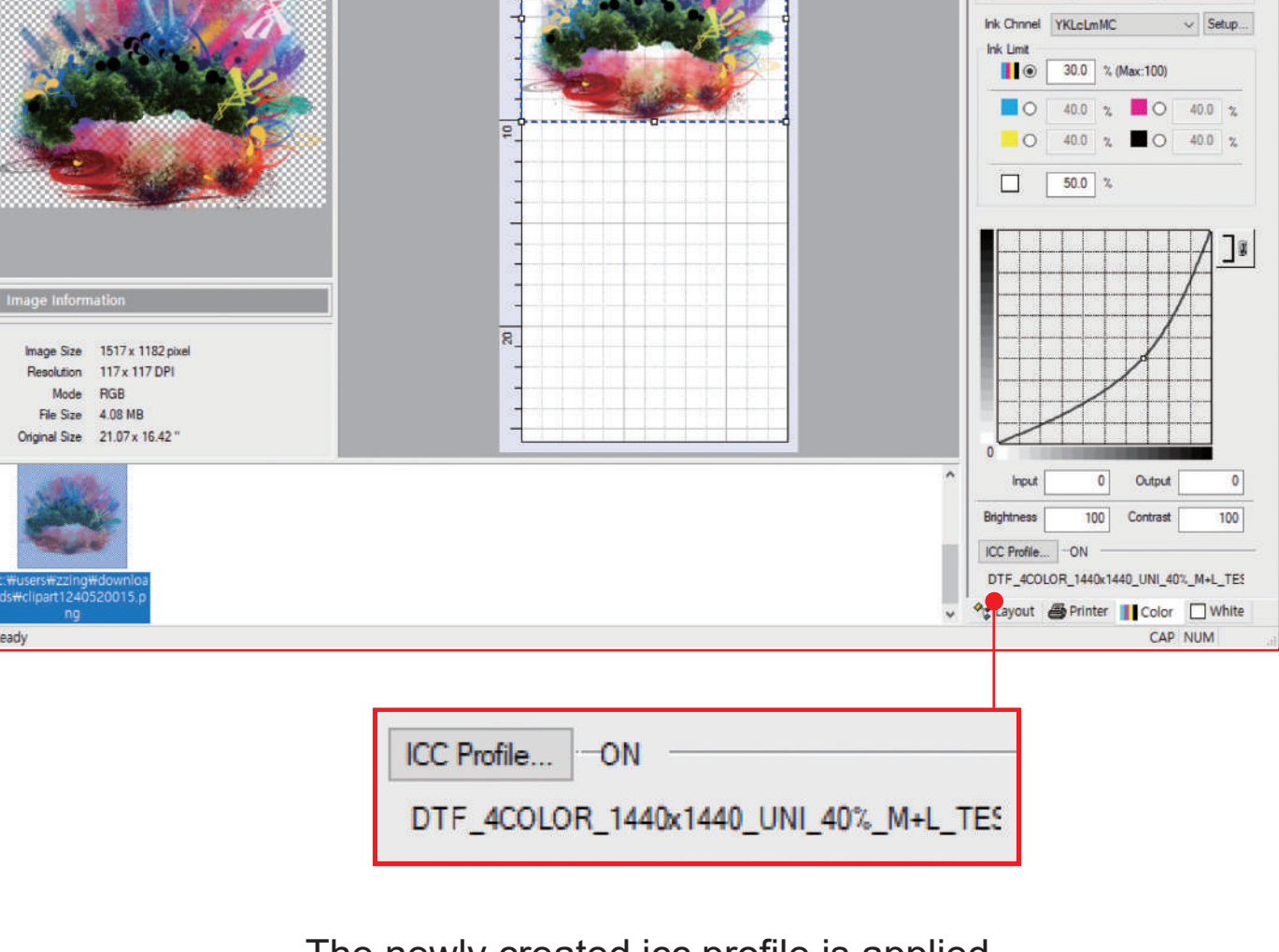
Easy and convenient icc profile on and off



Click the icc profile window in the color menu at the bottom right.



When the icc profile window opens, click use and activate it.



Check the newly created icc profile and click OK.



The newly created icc profile is applied.

Thank you