

RICOH

RICOH Ri 4000

Option Platen

User Guide

For Hat Platen/Shoe Platen/Sleeve Platen
Face Covering Platen



TABLE OF CONTENTS

TABLE OF CONTENTS	2
How to Read the Manuals	3
Before You Begin.....	3
Disclaimer	3
Notes.....	3
1. Printing Method.....	4
1.1. Target Printer.....	4
1.2. Setup Printer.....	4
1.3. Printing method for Textile Productionserver	4
2. Appendix.....	11
2.1. Revision history	11

How to Read the Manuals

Before You Begin...

Only appropriately trained users should operate the machine.

Disclaimer

Contents of this manual are subject to change without prior notice.

To the maximum extent permitted by applicable laws, in no event will the manufacturer be liable for any damages whatsoever arising out of failures of this machine, losses of the registered data, or the use or non-use of this machine and operation manuals provided with it.

Make sure that you always copy or have backups of the data registered in this machine. Documents or data might be erased due to your operational errors or malfunctions of the machine.

In no event will the manufacturer be responsible for any documents created by you using this machine or any results from the data executed by you.

Notes

Read this manual carefully before you use the machine and keep it handy for future reference.

For safe and correct use, be sure to read Safety Information before using the machine.

The manufacturer will not be responsible for any damage or expense that might result from the use of parts other than genuine parts from the manufacturer with your products.

For good output quality, the manufacturer recommends that you use genuine ink from the manufacturer.

Some illustrations in this manual may be slightly different from the machine.

Certain options may not be available in some countries. For details, please contact your local dealer. Depending on which country you are in, certain units may be optional. For details, please contact your local dealer.

1. Printing Method

1.1. Target Printer


This document applies only to Ricoh genuine platen only.

1.2. Setup Printer

Refer to Ricoh Ri series Direct to Garment Printer Manual.

1.3. Printing method for Textile Productions server

1. Start Textile Productions server.
2. Input the image to Textile Productions server.
3. Please set with Textile Productions server according to the platen type.

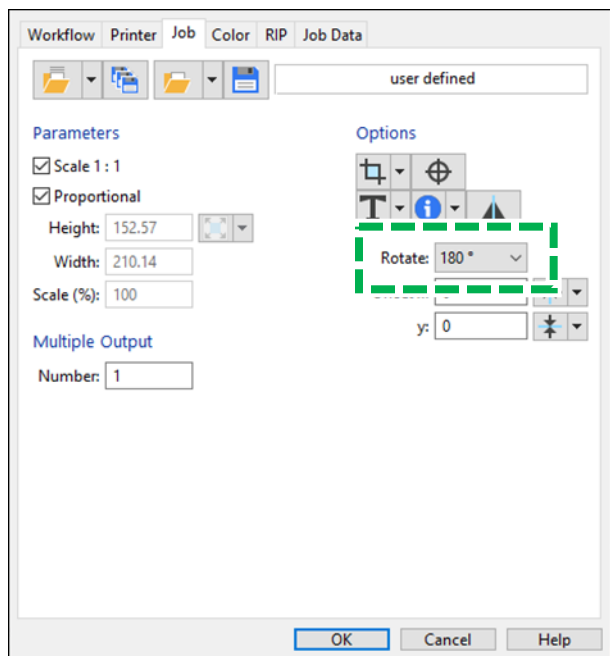
Platen type	Textile Productions server
Hat	a) User select Media size  CAUTION (*1)
Sleeve	a) User select Media size
Shoe	a) User select Media size b) User set Offset/Scaling
Face Covering	a) User select Media size b) User set Offset/Scaling

(CAUTION *1)

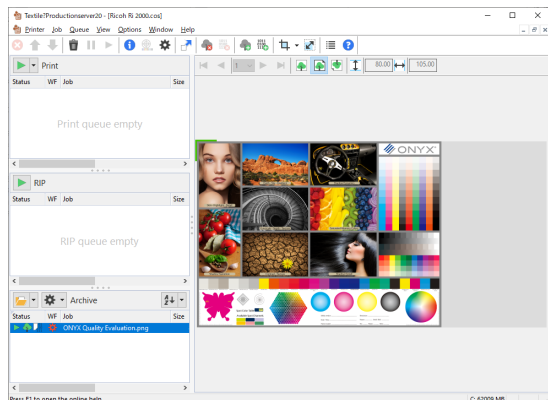
The image is printed 180 degrees inverted from the display on the Textile Productions server.

In that case, the user should set 180 degrees.

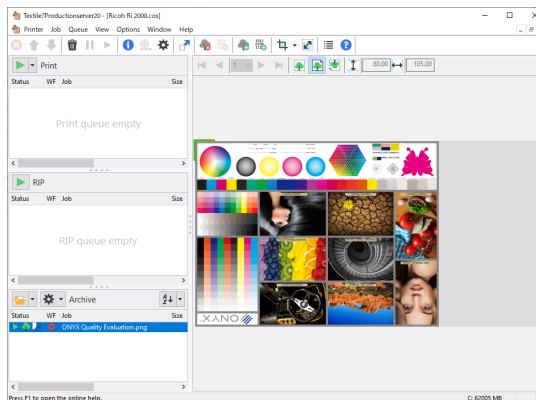
The print settings are below.



Default Settings:

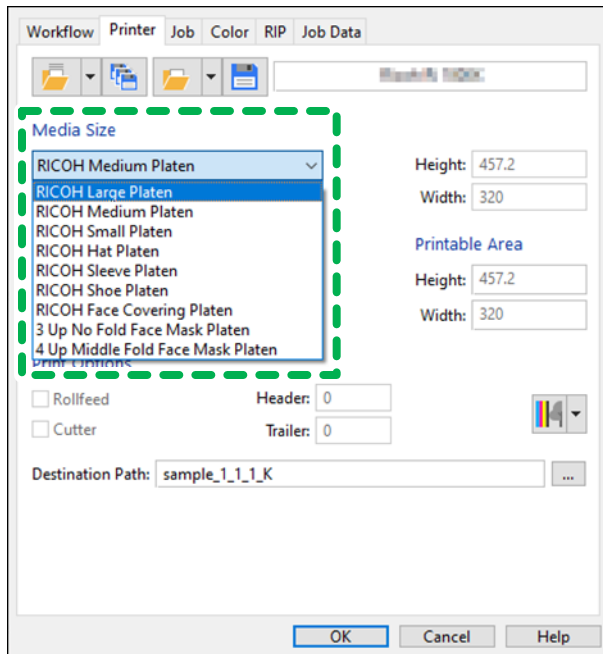


After Set Rotate(180 degree)



a) User select Media size

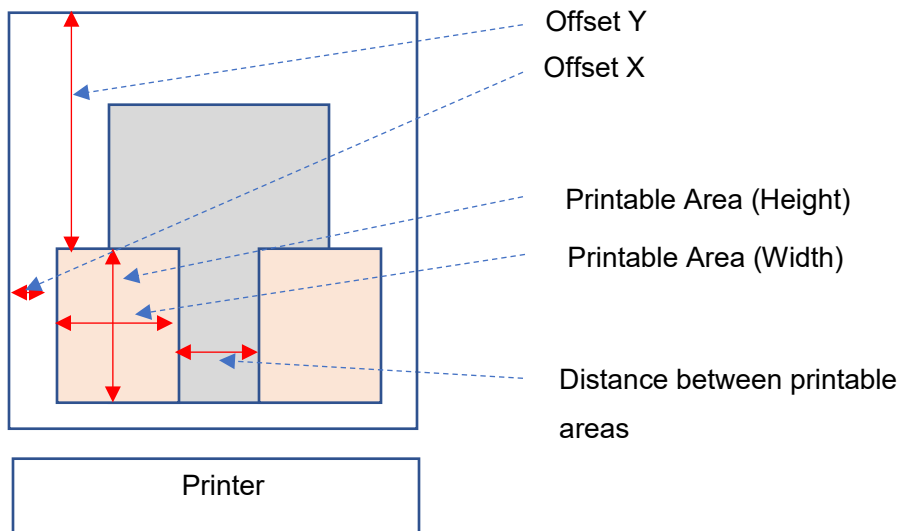
Textile Productionserver:



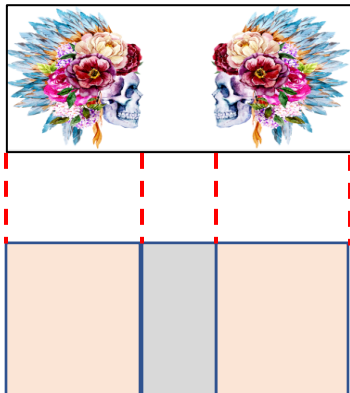
b) User set Offset/Scaling

◆ For “Shoe Platen”

According to type of Shoe Attachment, user set Height x Width, Offset x, y.



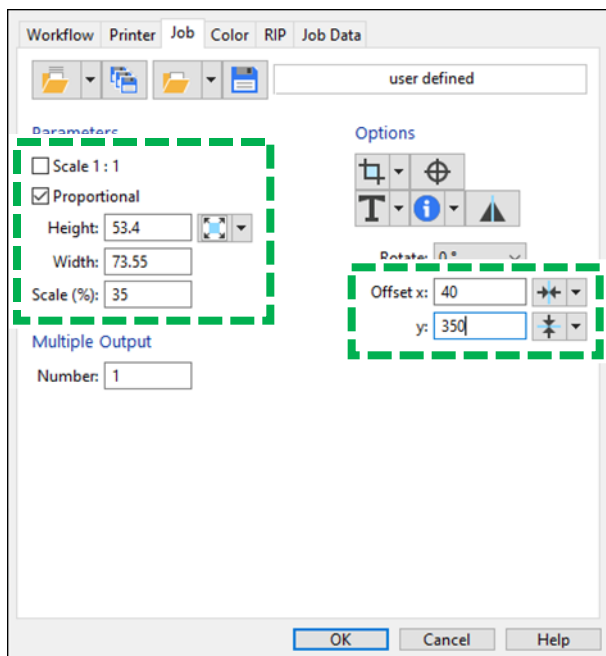
If you want to print on both feet, please prepare the following image and set Offset x,y.



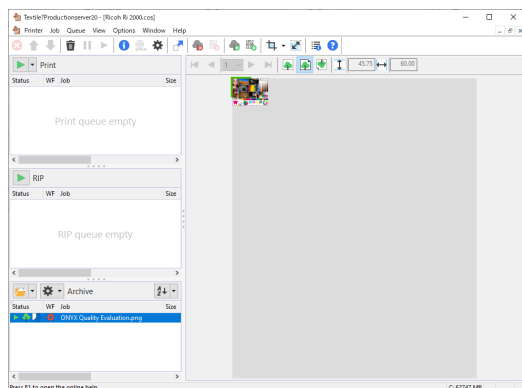
Offset of each Shoe attachment

Shoe Attachment	Offset	(Reference) Printable Area(Width x Height)	(Reference) Distance between printable areas
Small	X:20 Y:220	85 x 150 mm	205 mm
Medium	X:40 Y:360	50 x 50 mm	40 mm
Large	X:40 Y:350	60 x 60 mm	40 mm

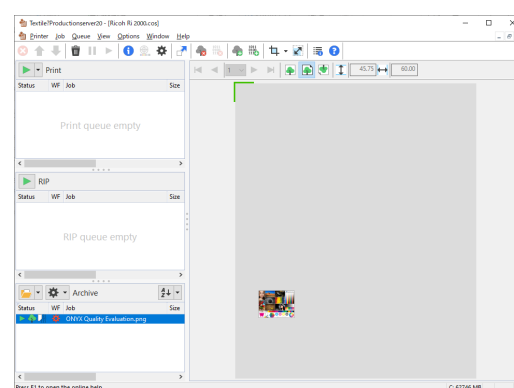
Setting method of Textile Productions server:



Default Settings:



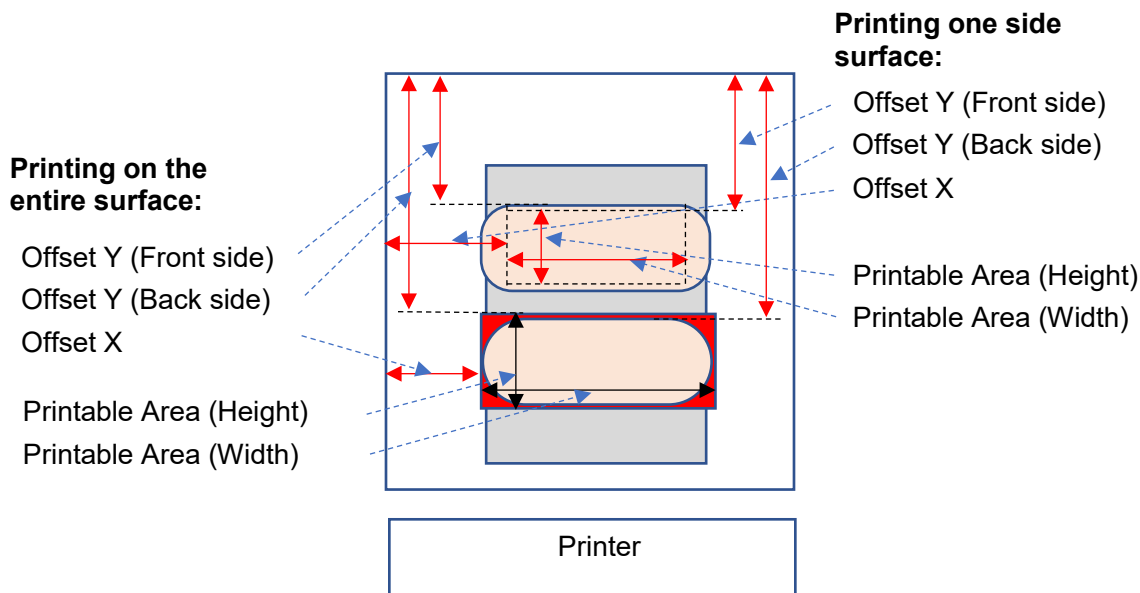
After Set Offset(X =40, Y=350)





◆ **For “Face Covering Platen”**

User set Height x Width, Offset x, y.

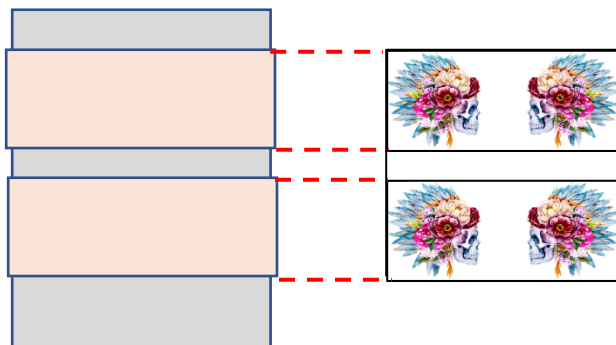
IMPORTANT! If you print with “Printing on the entire surface” method, depending on image, it may print to the area outside the platen.
In the figure below, it may be printed in the red area.



Offset of Face Covering Platen

Printing Method	(Reference) Offset	(Reference) Printable Area(Width x Height)
<p>Printing on the entire surface</p> 	<p>[Front side] X: 40 Y: 100 [Back side] X: 40 Y: 275</p>	330 x 120 mm
<p>Printing one side surface</p> 	<p>[Front side] X: 10 Y: 90 [Back side] X: 10 Y: 265</p>	385 x 140 mm

If you want to print on multiple media, please prepare the following image and set Offset x,y.



Setting method of Productionserver:

See page 6 "For "Shoe Platen"".

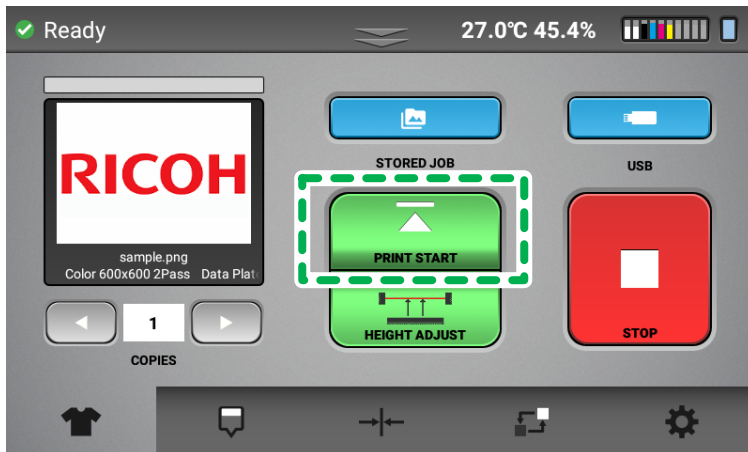
4. Adjust the platen height.

For details on height adjustment, see the user manual.

5. Send the print job to the printer.

For details, refer to the ColorGATE Productionserver help or user manual.

6. After the print preview appears on the preview window, press [PRINT START].



2. Appendix

2.1. Revision history

Revision	Date issued	Description
Initial version	September, 2023	

