

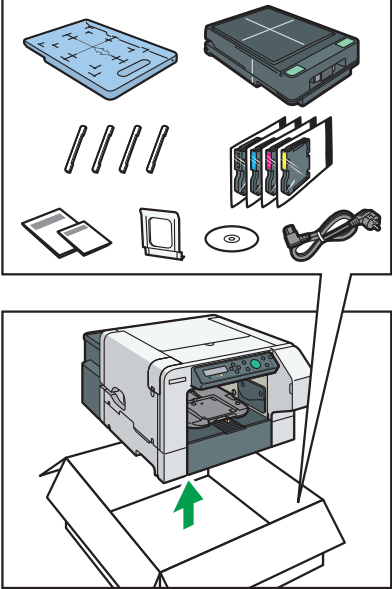
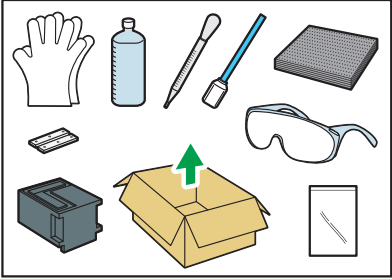
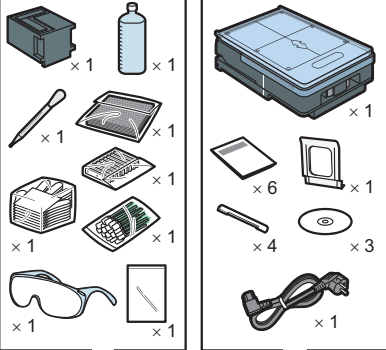
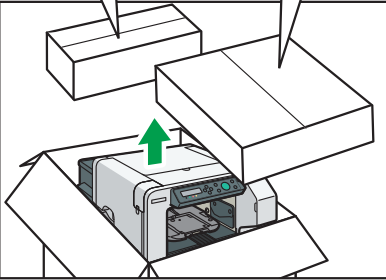
Notes for Users

This supplement includes corrections and additional information for the manuals provided with this machine.

◆ Quick Installation Guide

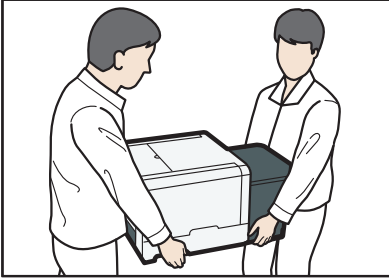
2. Unpacking

Correction

Error	Corrections
<p>1.</p>  <p>DSA188</p>  <p>DSA176</p> <p>For details about the maintenance kit, see Maintenance Guide.</p>	<p>1.</p>  <p>DSB160</p>  <p>For details about the maintenance kit, see Maintenance Guide.</p>

Error

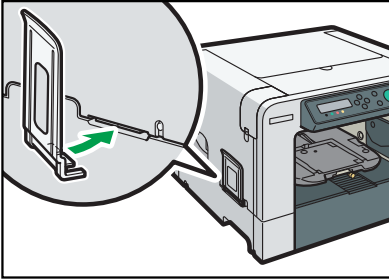
2.



DSA155

3. Remove the adhesive tape.

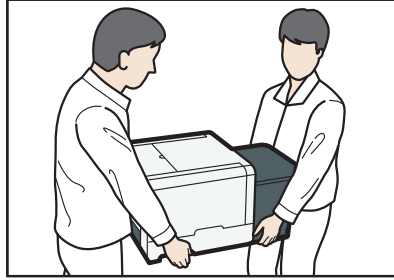
4.



DSA156

Corrections

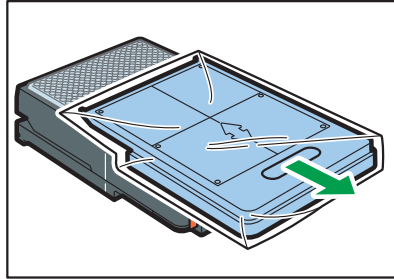
2.



DSA155

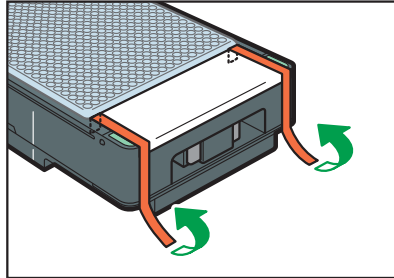
3. Remove the adhesive tape.

4. Remove the protection cover from the cassette.

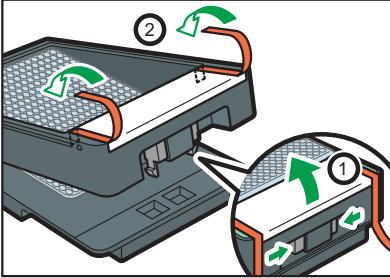
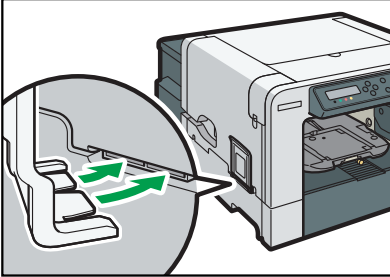


DSA191

5. Remove the adhesive tape from the cassette.
Remove the adhesive tape partway.



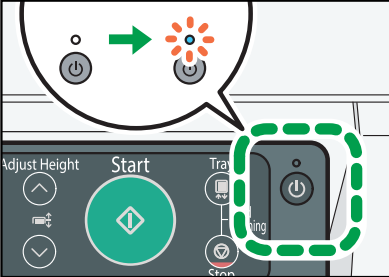
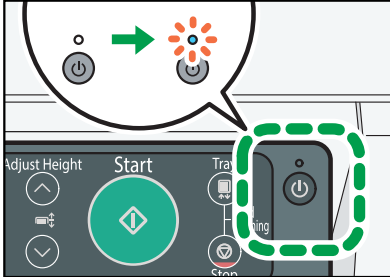
DSA192

Error	Corrections
	<p>Press the unlock button and lift the cover, and then remove the adhesive tape the rest of the way.</p>  <p>6.</p> 

◆ Quick Installation Guide

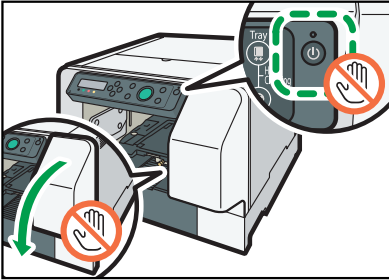
4. Turning the Power On

Correction

Error	Corrections
<p>5.</p> 	<p>5.</p>  <p>The "Set Tray" message appears.</p>

Error

6. Do not touch the printer for a while.

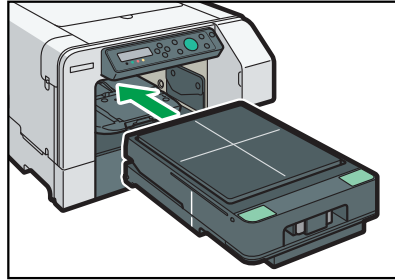


DSB152

Do not remove the plug from the wall outlet while the ink is being fed.

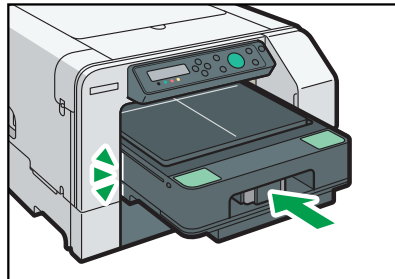
Corrections

6. Install the tray (cassette).

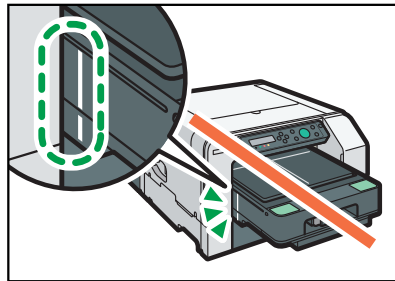


DSA181

7.

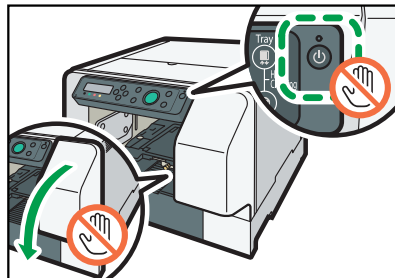


DSA182



DSA195

8. Do not touch the printer for a while.



DSB152

Do not remove the plug from the wall outlet while the ink is being fed.

◆ Quick Installation Guide

5. Installing Tray (Cassette)

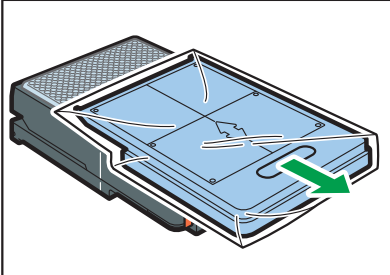
Correction

Error	Corrections
5. Installing Tray (Cassette)	You do not need to perform this as it is performed in "4. Turning the Power On".

◆ Operating Instructions

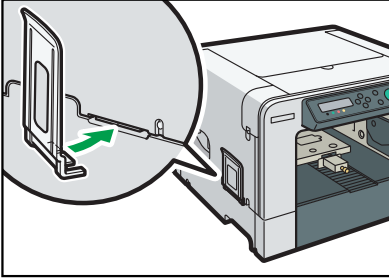
2. Preparing for Printing > Checking the Supplied Items and Unpacking the Machine

Correction

Error	Corrections
<p>1. Open the box and take out all supplied items. Check that all the following items are present:</p> <ul style="list-style-type: none">• A4 standard tray• Protection cover• <u>Cassette stand</u>• Maintenance kit• Power Cord• <u>Ink cartridge - Cyan</u>• <u>Ink cartridge - Magenta</u>• <u>Ink cartridge - Yellow</u>• <u>Ink cartridge - Black</u>• Quick Installation Guide• Safety Information• CD-ROM• User's Guide• Quick Guide• Notes for Wireless LAN Users• Maintenance Guide• Replacing the Ink Collection Unit Type 1• Manual Pocket <p>2. Take off the protective covering.</p> <p>3. Remove the plastic bag.</p> <p>4. Lift the machine and move it to the place where you want to install it. Grip the indentations for lifting at the base of the machine's sides with two people or more, as shown. Lift and carry the machine slowly and carefully.</p> <p>5. Remove the tape from the machine body.</p>	<p>1. Open the box and take out all supplied items. Check that all the following items are present:</p> <ul style="list-style-type: none">• A4 standard tray• Protection cover• Maintenance kit• Power Cord• Quick Installation Guide• Safety Information• CD-ROM• User's Guide• Quick Guide• Notes for Wireless LAN Users• Maintenance Guide• Replacing the Ink Collection Unit Type 1• Manual Pocket <p>2. Take off the protective covering.</p> <p>3. Remove the plastic bag.</p> <p>4. Lift the machine and move it to the place where you want to install it. Grip the indentations for lifting at the base of the machine's sides with two people or more, as shown. Lift and carry the machine slowly and carefully.</p> <p>5. Remove the tape from the machine body.</p> <p>6. <u>Remove the protection cover from the cassette.</u></p>  <p>DSA191</p>

Error

6. Install the manual pocket.



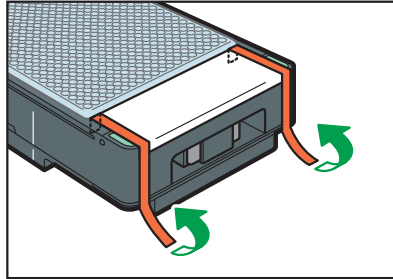
DSA113

7. Set the "User's Guide" supplied with this machine to the manual pocket.

8. Load the cassette stand.
Insert the two projections located at the bottom of the cassette stand into the holes of the machine.

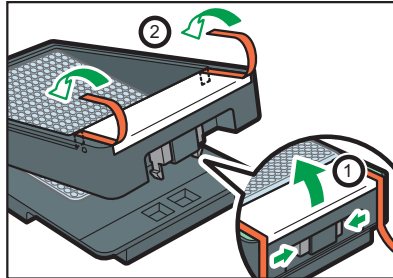
Corrections

7. Remove the adhesive tape from the cassette.
Remove the adhesive tape partway.



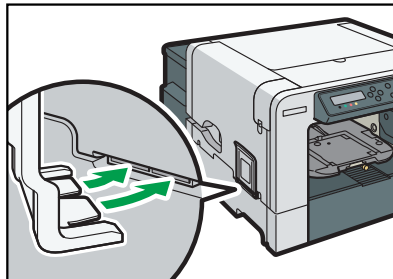
DSA192

Press the unlock button and lift the cover, and then remove the adhesive tape the rest of the way.



DSA193

8. Install the manual pocket.



DSA194

9. Set the "User's Guide" supplied with this machine to the manual pocket.

◆ Operating Instructions

2. Preparing for Printing > Checking the Computer and Installation Area > The area where the machine is to be placed

Correction

Error	Corrections
<ul style="list-style-type: none"> To prevent condensation, install the machine in an area where temperature and humidity conditions do not exceed those indicated in the diagram below. The machine may cease to print if these limitations are exceeded. <p>Region A (mainly Europe, Asia, and China)</p> <p>Region B (mainly North America)</p> <ul style="list-style-type: none"> White area: <u>Permissible Range</u> Blue area: <u>Recommended Range</u> 	<ul style="list-style-type: none"> To prevent condensation, install the machine in an area where temperature and humidity conditions do not exceed those indicated in the diagram below. The machine may cease to print if these limitations are exceeded. <p>Region A (mainly Europe, Asia, and China)</p> <p>Region B (mainly North America)</p> <ul style="list-style-type: none"> White area: <u>Operation range (Although operations are possible within this range, image quality is not guaranteed.)</u> Blue area: <u>recommended range</u>

◆ Operating Instructions

Correction

Error	Corrections
<p>Descriptions about the ink cartridge supplied with the machine.</p>	<p>Ink cartridges are not supplied with the machine.</p>

◆ Operating Instructions

Model-Specific Information > Presentation of the Product Names in This Manual

Correction

Error

Product name	Abbreviation
Attachment for Sleeve Type 1	Sleeve attachment

Corrections

A sleeve attachment is supplied with the multi tray.

◆ Operating Instructions

10. Appendix > Options and Consumables

Correction

Error	Corrections
Attachment for Sleeve Type 1 This is an attachment for the multi tray.	A sleeve attachment is supplied with the multi tray.

◆ Operating Instructions

4. Printing via the Printer Driver > Canceling Printing > Canceling Printing Using the [Stop] Key

Correction

Error	Corrections
Cancel all print jobs received 1. Check that printing has started. 2. Press the [Stop] key. The confirmation screen appears. 3. Press [▲] or [▼/Menu] key to display [Job Re-set? All Jobs], and then press the [#Enter] key. The confirmation screen appears. 4. Press the [#Enter] key. All print jobs received will be canceled. It takes time to cancel the print job.	This function does not apply to this machine.

◆ Operating Instructions

2. Preparing for Printing > Loading Fabrics > Loading a T-shirt in the Standard Tray

◆ Quick Guide

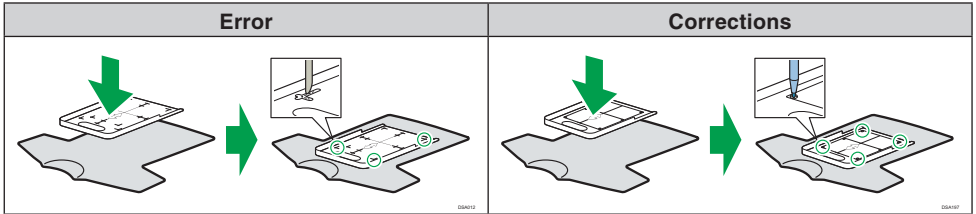
2. Loading the fabric in the cassette

◆ User's Guide

Printing on Fabric > Loading a Fabric in the A4 Standard Tray

Even though a similar item is described in "Notes for Users" (J088-6648), read this supplement that contains the latest information.

Correction



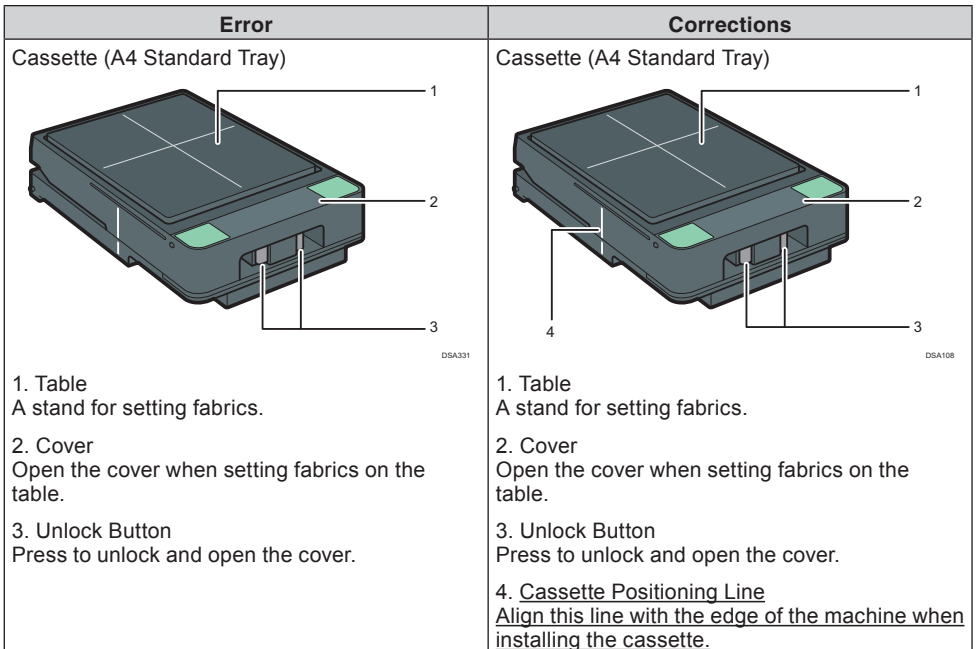
◆ Operating Instructions

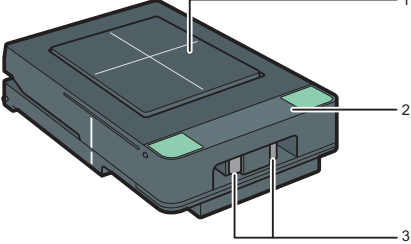
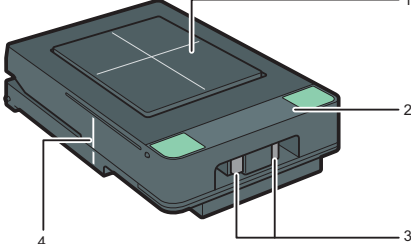
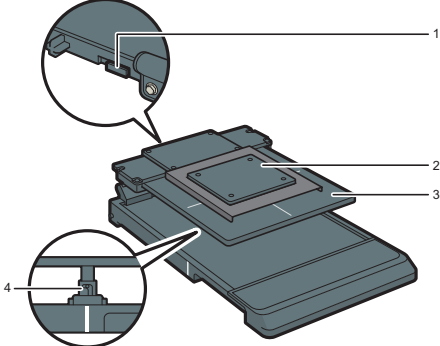
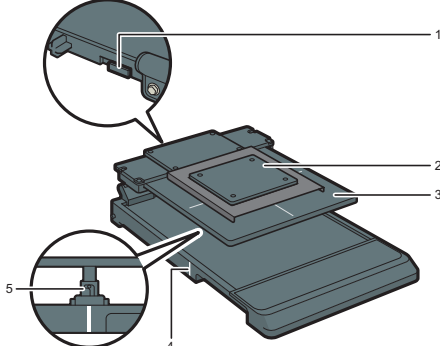
1. About This Product > Guide to Components

◆ User's Guide

Names of Components

Correction



Error	Corrections
<p data-bbox="82 118 264 145">Cassette (A5 Tray)</p>  <p data-bbox="512 424 544 435">DSA332</p> <ol data-bbox="82 448 499 635" style="list-style-type: none"> 1. Table A stand for setting fabrics. 2. Cover Open the cover when setting fabrics on the table. 3. Unlock Button Press to unlock and open the cover. 	<p data-bbox="564 118 745 145">Cassette (A5 Tray)</p>  <p data-bbox="994 424 1025 435">DSA109</p> <ol data-bbox="564 448 1042 695" style="list-style-type: none"> 1. Table A stand for setting fabrics. 2. Cover Open the cover when setting fabrics on the table. 3. Unlock Button Press to unlock and open the cover. 4. <u>Cassette Positioning Line</u> <u>Align this line with the edge of the machine when installing the cassette.</u>
<p data-bbox="82 703 284 730">Cassette (Multi Tray)</p>  <p data-bbox="512 1085 544 1096">DSB333</p> <ol data-bbox="82 1107 553 1449" style="list-style-type: none"> 1. Detection Lever Switch the lever location when using or not using the sleeve attachment. 2. Sleeve Attachment When printing on the sleeves of T-shirts, attach them on the multi tray. 3. Table A stand for setting fabrics. 4. Table Height Adjustment Knob Turn the knob counterclockwise to release the lock, and then adjust the height of the table. After adjusting it, turn the knob clockwise to put the lock. 	<p data-bbox="564 703 766 730">Cassette (Multi Tray)</p>  <p data-bbox="994 1085 1025 1096">DSA110</p> <ol data-bbox="564 1107 1042 1506" style="list-style-type: none"> 1. Detection Lever Switch the lever location when using or not using the sleeve attachment. 2. Sleeve Attachment When printing on the sleeves of T-shirts, attach them on the multi tray. 3. Table A stand for setting fabrics. 4. <u>Cassette Positioning Line</u> <u>Align this line with the edge of the machine when installing the cassette.</u> 5. Table Height Adjustment Knob Turn the knob counterclockwise to release the lock, and then adjust the height of the table. After adjusting it, turn the knob clockwise to put the lock.

◆ Operating Instructions

3. Printing on T-shirts > Creation Flow

Correction

Error

Step	Task	Reference for full details
1	This is the process to print on T-shirts clearly. The optional finisher <u>or a commercially available heat press</u> is used.	page 82 "Removing Dust and Flattening Fibers"
10	Use the optional finisher <u>or a commercially available heat press</u> to fix the printed image onto the T-shirt.	page 95 "Fixing Ink"

Corrections

Step	Task	Reference for full details
1	This is the process to print on T-shirts clearly. The optional finisher is used.	page 82 "Removing Dust and Flattening Fibers"
10	Use the optional finisher to fix the printed image onto the T-shirt. <u>For reference, in the case of a commercially available heat press, ink was fixed at 330°F (approx. 165°C) in 90 seconds.</u>	page 95 "Fixing Ink"

◆ Operating Instructions

3. Printing on T-shirts > Removing Dust and Flattening Fibers

Correction

Error	Corrections
This process is to print on T-shirts clearly. The optional finisher <u>or a commercially available heat press</u> is used.	This process is to print on T-shirts clearly. The optional finisher is used.
<p>★ Important</p> <ul style="list-style-type: none"> When using a commercially available heat press, see the manual included with the heat press for safety precautions and operation procedures for the heat press. 	This text does not apply to this machine.
<p>2. Use the finisher to flatten fibers and remove wrinkles from the T-shirt. <u>When using a commercially available heat press, follow the standards below for the temperature and time:</u> <u>Temperature: 165°C (329°F)</u> <u>Time: 5 seconds</u></p>	2. Use the finisher to flatten fibers and remove wrinkles from the T-shirt.

◆ User's Guide

Printing on Fabric > Removing Dust and Flattening Fibers

Correction

Error	Corrections
This process is to print on fabrics clearly. The optional finisher <u>or a commercially available heat press</u> is used.	This process is to print on fabrics clearly. The optional finisher is used.
<p>★ Important</p> <ul style="list-style-type: none"> When using a commercially available heat press, see the manual included with the heat press for safety precautions and operation procedures for the heat press. 	This text does not apply to this machine.
<p>2. Use the finisher to flatten fibers and remove wrinkles.</p> <ul style="list-style-type: none"> <u>When using a commercially-available heat press, follow the standard below for the temperature and time: 165°C (329°F) at 5 seconds</u> 	2. Use the finisher to flatten fibers and remove wrinkles.

◆ Operating Instructions

3. Printing on T-shirts > Fixing Ink

◆ User's Guide

Printing on Fabric > Fixing Ink

Correction

Error	Corrections
Use the optional finisher <u>or a commercially available heat press</u> to fix the ink to the fabric. When using the multi tray <u>or a commercially available heat press</u> , remove the fabric from the cassette, and then fix the ink to the fabric.	Use the optional finisher to fix the ink to the fabric. When using the multi tray, remove the fabric from the cassette, and then fix the ink to the fabric.
<p>★ Important</p> <ul style="list-style-type: none"> When using a commercially available heat press, see the manual included with the heat press for safety precautions and operation procedures for the heat press. 	This text does not apply to this machine.
<p>★ Important</p> <ul style="list-style-type: none"> Do not use the optional finisher while using the multi tray and the sleeve attachment because using it may cause a failure. <u>Remove the fabric from the multi tray and the sleeve attachment. Place the heat resistant paper on the fabric, and then use a commercially available heat press to fix the ink to the fabric. If you do not use the heat resistant paper, the heat press and the fabric may become dirty.</u> 	<p>★ Important</p> <ul style="list-style-type: none"> Do not use the optional finisher while using the multi tray and the sleeve attachment because using it may cause a failure. <u>Remove the fabric from the multi tray and the sleeve attachment, and then fix the ink to the fabric.</u>
<p>↓ Note</p> <ul style="list-style-type: none"> In the case of a commercially available conveyor oven, ink was fixed at 330°F (approx. 165°C) in 3 minutes and 30 seconds. 	This text does not apply to this machine.

◆ Quick Guide

Correction

Error	Corrections
<p>★ Important</p> <ul style="list-style-type: none"> When using a commercially available heat press, be careful about the temperature and time. 	This text does not apply to this machine.
When using a commercially available heat press, refer to the manual attached to it.	This text does not apply to this machine.

◆ Quick Guide

1. Smoothing wrinkles/flattening fibers

Correction

Error	Corrections
Standard temperature and time when a commercially available heat press is used: 165°C (329°F) at 5 seconds.	This text does not apply to this machine.

◆ Quick Guide

4. Fixing ink

Correction

Error	Corrections
<p>2. Use the optional finisher to fix ink. For reference, in the case of a commercially available heat press, ink was fixed at 330°F (approx. 165°C) in 90 seconds.</p> <p><u>In the case of a commercially available conveyor oven, ink was fixed at 330°F (approx. 165°C) in 3 minutes and 30 seconds.</u></p>	<p>2. Use the optional finisher to fix ink. For reference, in the case of a commercially available heat press, ink was fixed at 330°F (approx. 165°C) in 90 seconds.</p>

◆ Operating Instructions

2. Preparing for Printing > Loading Fabrics > Loading a T-shirt in the Standard Tray

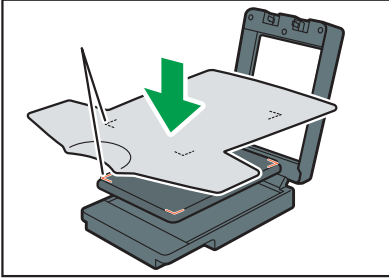
Even though a similar item is described in "Notes for Users" (J088-6648), read this supplement that contains the latest information.

Correction

Error	Corrections
Loading a <u>T-shirt</u> in the Standard Tray	Loading a <u>Fabric</u> in the Standard Tray
This section explains how to load a <u>T-shirt</u> in the A4 standard tray. The same operation applies when the A5 tray is used.	This section explains how to load a <u>fabric</u> in the A4 standard tray. The same operation applies when the A5 tray is used.

Error

6. Load the fabric on the table.
When loading the fabric, align the corners of the table with the marks on the fabric.

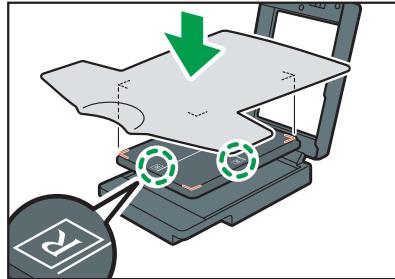


DSA369

Corrections

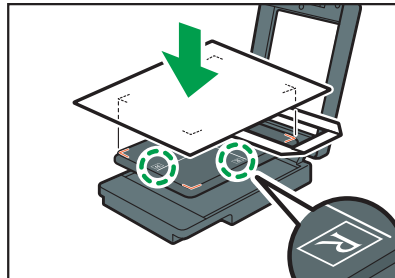
6. Load the fabric on the table.
When loading the fabric, align the corners of the table with the marks on the fabric.

- When loading a T-shirt or sweatshirt



DSA219

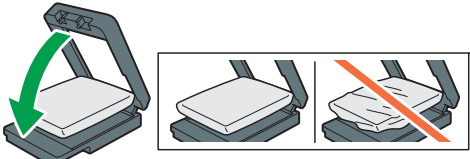
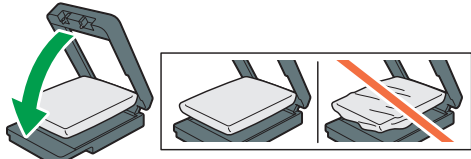
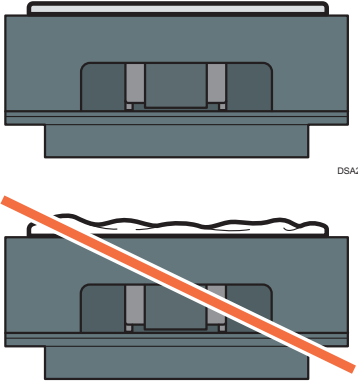
- When loading a canvas tote bag or natural cotton tote bag



DSA220

When loading a medium size canvas tote bag or natural cotton tote bag in the A4 standard tray, the cassette might not have enough space for the tote bag. If it is difficult to load the tote bag in the A4 standard tray, use the A5 tray for the tote bag.

When you print on a natural cotton tote bag or a T-shirt other than a Heavyweight T-shirt, the ink may bleed through the fabric and stain other parts. You can prevent this staining by inserting a piece of paper against the inner side.

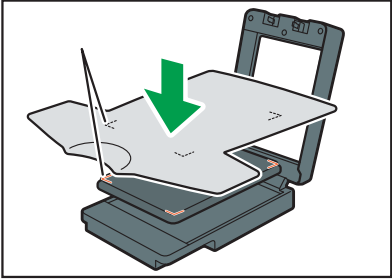
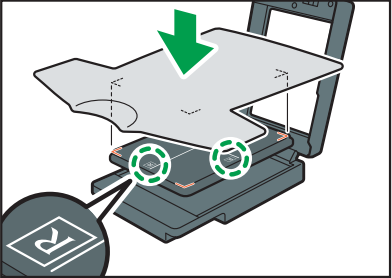
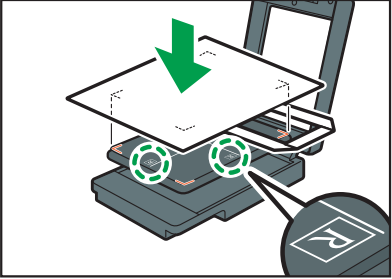
Error	Corrections
<p>8. After checking that no wrinkles or slack remains on the print side, close the cover. As you close the cover, smooth away wrinkles with your hand.</p> <p>Check that the fabric is not protruding from the cassette.</p> <p>When using the optional finisher, smooth wrinkles and flatten fibers after loading the fabric in the cassette.</p>  <p style="text-align: right; font-size: small;">DSA014</p>	<p>8. After checking that no wrinkles or slack remains on the print side, close the cover. As you close the cover, smooth away wrinkles with your hand.</p> <p>Check that the fabric is not protruding from the cassette.</p> <p>When using the optional finisher, smooth wrinkles and flatten fibers after loading the fabric in the cassette.</p>  <p style="text-align: right; font-size: small;">DSA014</p> <p><u>After closing the cover, make sure that the fabric is loaded so its surface is parallel to the cover.</u></p>  <p style="text-align: right; font-size: small;">DSA217</p> <p style="text-align: right; font-size: small;">DSA218</p>

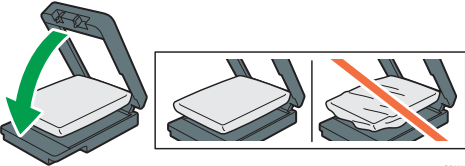
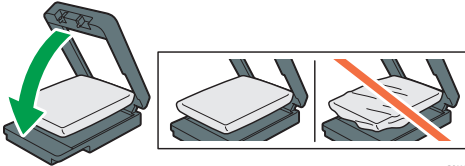
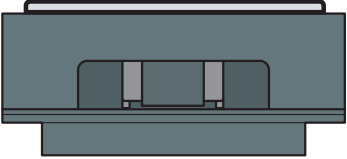
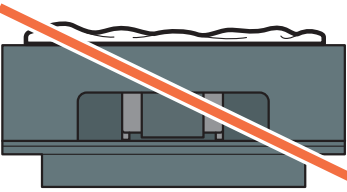
◆ User's Guide

Printing on Fabric > Loading a Fabric in the A4 Standard Tray

Even though a similar item is described in "Notes for Users" (J088-6648), read this supplement that contains the latest information.

Correction

Error	Corrections
<p>5. Load the fabric on the table.</p> <ul style="list-style-type: none">• When loading the fabric, align the corners of the table with the marks on the fabric.  <p>DSA369</p>	<p>5. Load the fabric on the table.</p> <ul style="list-style-type: none">• When loading the fabric, align the corners of the table with the marks on the fabric.• <u>When loading a T-shirt or sweatshirt</u>  <p>DSA219</p> <ul style="list-style-type: none">• <u>When loading a canvas tote bag or natural cotton tote bag</u>  <p>DSA220</p> <p><u>When loading a medium size canvas tote bag or natural cotton tote bag in the A4 standard tray, the cassette might not have enough space for the tote bag. If it is difficult to load the tote bag in the A4 standard tray, use the A5 tray for the tote bag.</u></p> <p><u>When you print on a natural cotton tote bag or a T-shirt other than a Heavyweight T-shirt, the ink may bleed through the fabric and stain other parts. You can prevent this staining by inserting a piece of paper against the inner side.</u></p>

Error	Corrections
<p>7. Make sure that no wrinkles or slack remain on the print surface, and then close the cover. As you close the cover, smooth away any wrinkles with your hand.</p> <ul style="list-style-type: none"> • Make sure that the fabric fits on the cassette. • When using the optional finisher, smooth wrinkles and flatten fibers after loading the fabric in the cassette.  <p style="text-align: right; font-size: small;">DSA014</p>	<p>7. Make sure that no wrinkles or slack remain on the print surface, and then close the cover. As you close the cover, smooth away any wrinkles with your hand.</p> <ul style="list-style-type: none"> • Make sure that the fabric fits on the cassette. • When using the optional finisher, smooth wrinkles and flatten fibers after loading the fabric in the cassette.  <p style="text-align: right; font-size: small;">DSA014</p> <ul style="list-style-type: none"> • <u>After closing the cover, make sure that the fabric is loaded so its surface is parallel to the cover.</u>  <p style="text-align: right; font-size: small;">DSA217</p>  <p style="text-align: right; font-size: small;">DSA218</p>

◆ Operating Instructions

5. Machine Setup Menus > Using the [Maintenance] Menu

Correction	
Error	Corrections
<p>Clean Maint Unit Move the maintenance unit to a position where cleaning can be carried out. <u>Clean the maintenance unit approximately once a week.</u></p>	<p>Clean Maint Unit Move the maintenance unit to a position where cleaning can be carried out. <u>If the message prompting you to provide regular maintenance appears, clean the Maintenance Unit.</u></p>
<p>Auto Head Maint. The print head nozzles clean automatically. <u>Clean the print head nozzles approximately once a week.</u></p>	<p>Auto Head Maint. The print head nozzles clean automatically. <u>If the message prompting you to provide regular maintenance appears, clean the print head.</u></p>

◆ Operating Instructions

9. Troubleshooting > Print Results Are Not Satisfactory > Prints are Unsatisfactory

Even though a similar item is described in "Notes for Users" (J088-6648), read this supplement that contains the latest information.

Correction

Error	Corrections
<p>Do you perform regular maintenance? If the Maintenance Unit and print head nozzles are not cleaned regularly, normal printing results may not be achieved. If the message prompting you to provide regular maintenance appears, clean <u>the Maintenance Unit and print head</u>. <u>Clean the Maintenance Unit and print head approximately once a week.</u></p>	<p>Do you perform regular maintenance? If the Maintenance Unit and print head nozzles are not cleaned regularly, normal printing results may not be achieved. If the message prompting you to provide regular maintenance appears, clean <u>both the Maintenance Unit and print head</u>.</p>

◆ User's Guide

Machine Maintenance > Regular Maintenance/Cleaning the Internal Compartments

Even though a similar item is described in "Notes for Users" (J088-6648), read this supplement that contains the latest information.

Correction

Error	Corrections
<p>Regular maintenance If the message prompt to perform regular maintenance appears, clean <u>the Maintenance Unit and print head</u>. <u>Clean the Maintenance Unit and print head approximately once a week.</u></p>	<p>Regular maintenance If the message prompt to perform regular maintenance appears, clean <u>both the Maintenance Unit and print head</u>.</p>

◆ Operating Instructions

9. Troubleshooting > Error & Status Messages on the Display > Error Messages

◆ User's Guide

If Errors Occur > Error Messages and Troubleshooting

Correction

Error

Message	Causes	Solutions
Routine Maint. Required	Regular maintenance is needed.	Clean the Maintenance Unit and the print head. <u>Clean the Maintenance Unit and the print head approximately once a week.</u>

Corrections

Message	Causes	Solutions
Routine Maint. Required	Regular maintenance is needed.	Clean <u>both</u> the Maintenance Unit and the print head.

◆ Operating Instructions

5. Machine Setup Menus > Using the [Maintenance] Menu > Auto Head Maint.

◆ Maintenance Guide

Cleaning the Print Head Nozzles

Correction

Error	Corrections
If the message prompting you to provide regular maintenance appears, clean the print head. <u>Clean the print head approximately once a week.</u>	If the message prompting you to provide regular maintenance appears, clean the print head.

◆ Operating Instructions

9. Troubleshooting > Error & Status Messages on the Display > Status Messages

Correction

Error

Message	Status
Resetting Job...	The machine is reinitializing a print job. Wait a moment.

Corrections

Message	Status
Resetting Job...	The machine is reinitializing a print job. Wait a moment. <u>If the message does not disappear after a while, turn off the machine, and then turn it back on.</u>

◆ Operating Instructions

9. Troubleshooting > Error & Status Messages on the Display > Error Messages

◆ User's Guide

If Errors Occur > Error Messages and Troubleshooting

Correction

Error

Message	Causes	Solutions
Ink Collector is not set / Set the Ink Collector Unit	The ink collector unit is not installed or is installed incorrectly. Alternatively, an ink collector unit not meant for this machine may be installed.	Install the ink collector unit for this machine correctly.

Corrections

Message	Causes	Solutions
Ink Collector is not set / Set the Ink Collector Unit	The ink collector unit is not installed or is installed incorrectly. Alternatively, an ink collector unit not meant for this machine may be installed.	Install the ink collector unit for this machine correctly. <u>The ink collector unit meant for this machine is labeled "J089" under its handle.</u>

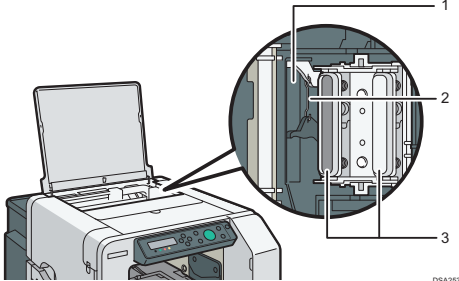
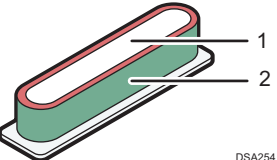
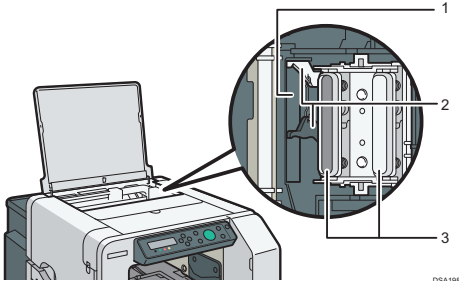
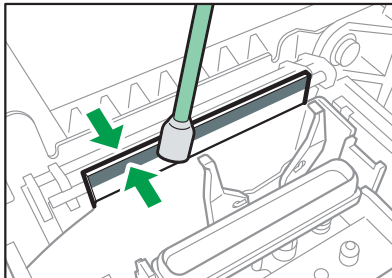
◆ Operating Instructions

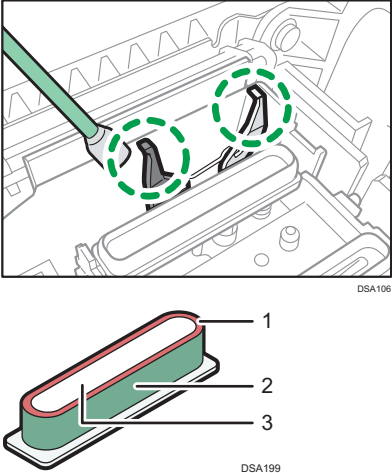
5. Machine Setup Menus > Using the [Maintenance] Menu > Clean Maint Unit

◆ Maintenance Guide

Cleaning the Maintenance Unit

Correction

Error	Corrections
<p>If a message prompting you to provide regular maintenance appears, clean the Maintenance Unit. <u>Clean the Maintenance Unit approximately once a week.</u></p>	<p>If a message prompting you to provide regular maintenance appears, clean the Maintenance Unit.</p>
<p>6. Wipe off any dirt in the area shown in the figure with the cleaning stick moistened with the cleaning liquid. For the top part of the cap (shown in red in the figure), wipe it gently.</p>  <p>1. Wiper (back and front) 2. Ejected Ink Receiver (entire inside) 3. Cap (side part and top part)</p>  <p>1. Top part 2. Side part</p> <p>DSA253</p>	<p>6. Wipe off any dirt in the area shown in the figure with the cleaning stick moistened with the cleaning liquid. For the top part of the cap (shown in red in the figure), wipe it gently.</p>  <p>1. Wiper (back and front) 2. <u>Lever</u> 3. Cap (side part, top part, and <u>inner part</u>)</p>  <p>DSA198</p> <p>DSA200</p>

Error	Corrections
	 <p data-bbox="924 411 960 427">DSA106</p> <p data-bbox="807 592 848 608">DSA199</p> <ol data-bbox="583 619 703 683" style="list-style-type: none"> 1. Top part 2. Side part 3. Inner part

◆ Operating Instructions

9. Troubleshooting > The Cassette Does Not Operate Correctly > Adjusting the Height of the Cassette

Correction	
Error	Corrections
<p>Normally, the height of the cassette is automatically adjusted at the start of printing.</p>	<p>Normally, the height of the cassette is automatically adjusted at the start of printing, <u>but you can adjust the height of the cassette using the [Adjust Height▼] key or the [Maintenance] menu. This section explains how to adjust the height of the cassette using the [Adjust Height▼] key to resolve the problem caused by the height position sensor reacting after the machine starts printing. For details about adjusting the height of the cassette using the [Maintenance] menu to improve the image quality, see "Adjusting the height of the cassette manually".</u></p>

◆ Operating Instructions

9. Troubleshooting > The Cassette Does Not Operate Correctly > Adjusting the Height of the Cassette

Even though a similar item is described in "Notes for Users" (J088-6648), read this supplement that contains the latest information.

Additional information

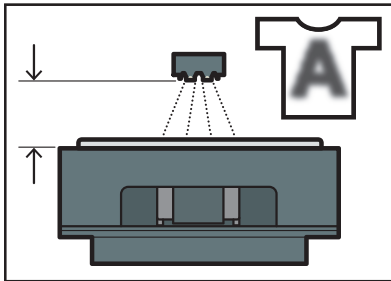
Adjusting the height of the cassette manually

★ Important

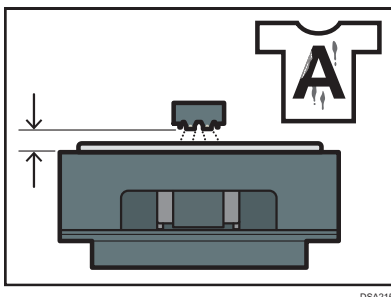
- If you enter a negative value as the height value, the height position sensor in the machine may react. Load the fabric correctly so that the printing surface can be flat.
- If the fabric is not correctly set after the height of the cassette is adjusted manually, the machine might not start printing because a height position sensor in the machine reacts when you send a print job. In this case, remove the cassette, load the fabric into the cassette correctly, and then load the cassette into the machine.
- The image quality might deteriorate if you change the height value significantly. In this case, adjust the registration.
- Adjust the height little by little so that the print side is not rubbed.

Normally, the height of the cassette is automatically adjusted at the start of printing. If the printed image is blurry or there is dust stuck to it, or the height of the cassette may not be adjusted appropriately, adjust the height of the cassette manually using the [Maintenance] menu.

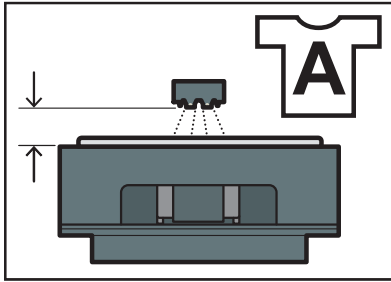
If the distance between the print head and the fabric is too large, the printed image might be blurry. If this is the case, enter a negative value as the height value.



If the distance between the print head and the fabric is too small, dust might stick to the fabric. If this is the case, clean both the Maintenance Unit and print head. If the problem is not resolved, enter a positive value as the height value.



When the distance between the print head and the fabric is suitable, the printed image is satisfactory as shown in the figure.



DSA216

1. Press the [▼/Menu] key.
2. Press the [▲] or [▼/Menu] key to display [Maintenance], and then press the [#Enter] key.
3. Press the [▲] or [▼/Menu] key to display [Height Adjust], and then press the [#Enter] key.
4. Press the [#Enter] key.
5. Press the [▲] or [▼/Menu] key to enter the height value, and then press the [#Enter] key.
 - You can enter a height value from -20 to 20 in increments of 0.1. We recommend changing the existing setting by entering values in increments of ± 0.1 to 0.3.
 - If the printed image is blurry when the A4 standard tray or A5 tray is used, first enter "-2.0" as the height value, and then increase the value in increments of 0.1 to 0.3 until the error message is not displayed. While adjusting the height, load the fabric into the cassette so that the printing surface can be flat.
 - If you enter a negative value as the height value and the value is too small, the machine might not start printing because the height position sensor in the machine reacts. Adjust the height of the cassette by pressing the [Adjust Height▲] or the [Adjust Height▼] key.

↓ Note

- The value you set in Step 5 remains after the machine is turned off.
- If you enter "-2.0" as the height value and want to increase the value in Step 5, press the [Stop] key to cancel printing whenever you enter a new height value.

◆ Operating Instructions

9. Troubleshooting > Print Results Are Not Satisfactory > Prints are Unsatisfactory

Even though a similar item is described in "Notes for Users" (J088-6648), read this supplement that contains the latest information.

Additional information

Have you changed the settings in the printer driver?

When you change the setting for [Select Print Quality:] or [Garment Type:] in the printer driver, you might need to adjust the height of the cassette on the machine.

See "Printing", "Adjusting the height of the cassette manually", Operating Instructions.

Have you adjusted the height of the cassette?

Usually the machine adjusts the height of the cassette automatically. If the printed image is blurry or dusty, adjust the height of the cassette manually. Printed images may be blurry, especially, when you load a T-shirt and set [Select Print Quality:] to [Vivid] in the printer driver. If this is the case, adjust the height of the cassette.

See "Adjusting the height of the cassette manually", Operating Instructions.

◆ Operating Instructions

9. Troubleshooting > The Cassette Does Not Operate Correctly > Checking the Status of the Fabric and the Cassette > The fabric is incorrectly loaded

Additional information

Wrinkly fabric is loaded.

When printing on wrinkly fabric while [Select Print Quality:] is set to [Vivid] and [Garment Type:] is set to [T-shirt (Pale)] in the printer driver, a height position sensor in the machine may react. If this is the case, set [Select Print Quality:] to [Fine].

See "Printing", Operating Instructions.

◆ Operating Instructions

10. Appendix > Recommended Consumables

Additional information

- Cleaning liquid

◆ Operating Instructions

2. Preparing for Printing > Plugging in the Power Cord and Turning the Power On

Additional information

★ Important

- Some ink is consumed to fill the print heads when you turn on the machine for the first time.

◆ Operating Instructions

5. Machine Setup Menus > Using the [Maintenance] Menu > Clean Maint Unit

◆ Maintenance Guide

Cleaning the Maintenance Unit

Additional information

★ Important

- When cleaning the Maintenance Unit, be careful not to drop the cleaning stick into the machine.

◆ Operating Instructions

5. Machine Setup Menus > Using the [Maintenance] Menu > Clean Maint Unit

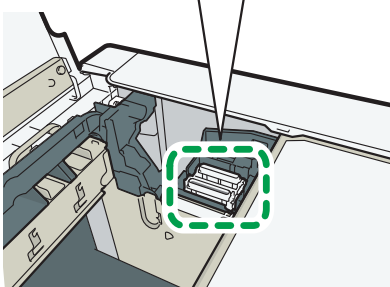
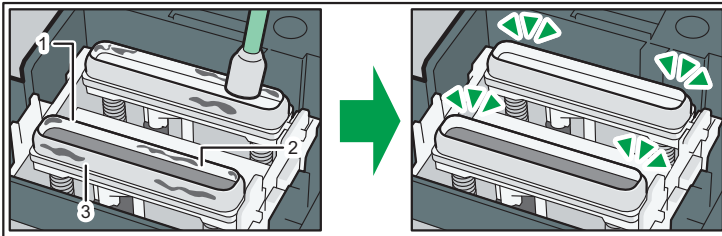
◆ Maintenance Guide

Cleaning the Maintenance Unit

Even though a similar item is described in "Notes for Users" (J088-6648), read this supplement that contains the latest information.

Additional information

Wipe the side part, top part, and inner part of the cap until all the solidified ink is removed.



1. Top part
2. Inner part
3. Side part

DSA107

The video instructions we provide also explain how to clean the Maintenance Unit. For details, see the manufacturer's website.

◆ Operating Instructions

4. Printing via the Printer Driver > Printing

Additional information

- Ink consumption increases when you set [Select Print Quality:] to [Vivid] or [Garment Type:] to [Thick Garment] in the printer driver.

◆ Operating Instructions

3. Printing on T-shirts > Creation Flow

Additional information

CAUTION

- Do not use the optional finisher for purposes other than flattening fibers, removing wrinkles, and fixing ink. Doing so may cause a fire.

