

---

ALL  
NEW  
ALL IN  
ONE

polyprint®  
GARMENT PRINTERS



Introducing **automation**  
in **DTF printing** technology

---

**filmJet**

**DTF**  
Roll to Roll  
**Printer**



# what?

Filmjet ALL IN ONE Direct-To-Film system delivers longer **unattended print runs** and minimizes the need for human intervention, resulting in **reduced costs** and **increased efficiency**.

Filmjet is aimed to help established DTF print producers looking to **scale up their operations**, while benefiting from enhanced system stability, reliability, and productivity.

Filmjet is the response to the industry's demand for a **reliable complete solution from a trusted manufacturer**. Polyprint guarantees a smooth customer experience coupled with outstanding service and support.

# how?

Filmjet integrates **advanced automation technologies, industrial-grade printing speeds** and features such as the **Smart System-Control** and the **Constant Film Tension**.

Along with **Auto Powder Recycling**, these automations, ensure the protection of both the equipment and the print jobs, leading to substantial **cost savings** and **trouble free workflow** as well as **user safety**.

# features



## Smart System Control

Monitors all system processes and fully automates printer functions such as the activation/deactivation of the powder applicator and the dryer when needed, preventing print runs from damage. This ensures optimal energy savings and minimizes material waste.



## Constant Film Tension

The motorized winding and unwinding system and the adjustable film pressure maintain consistent tension. This setup keeps the film aligned and flat, preventing sidewise shifting that could lead to issues during printing, powdering or the drying process.



## Powder Application and Recycling

A fully automatic mechanism, equipped with a set of adjustable brushed rollers precisely applies regulated powder amount, ensuring uniform diffusion. Excess powder is recycled via an automatic system, transferring it to separate containers atop the central tank for reuse.



## Air/Vacuum Powder Removal

An adjustable air vacuum, coupled with an "air knife," efficiently removes excess powder by redirecting it back into the suction area. Additionally, an antistatic bar neutralizes static electricity onto the film to prevent powder adherence and maintain cleanliness.



## Ink Circulation and Agitation

Filmjet features automated systems for ink circulation (White) and agitation (CMYKW), ensuring consistent ink quality for optimal print head performance and smooth workflow. This guarantees high-quality output and superior printing results.



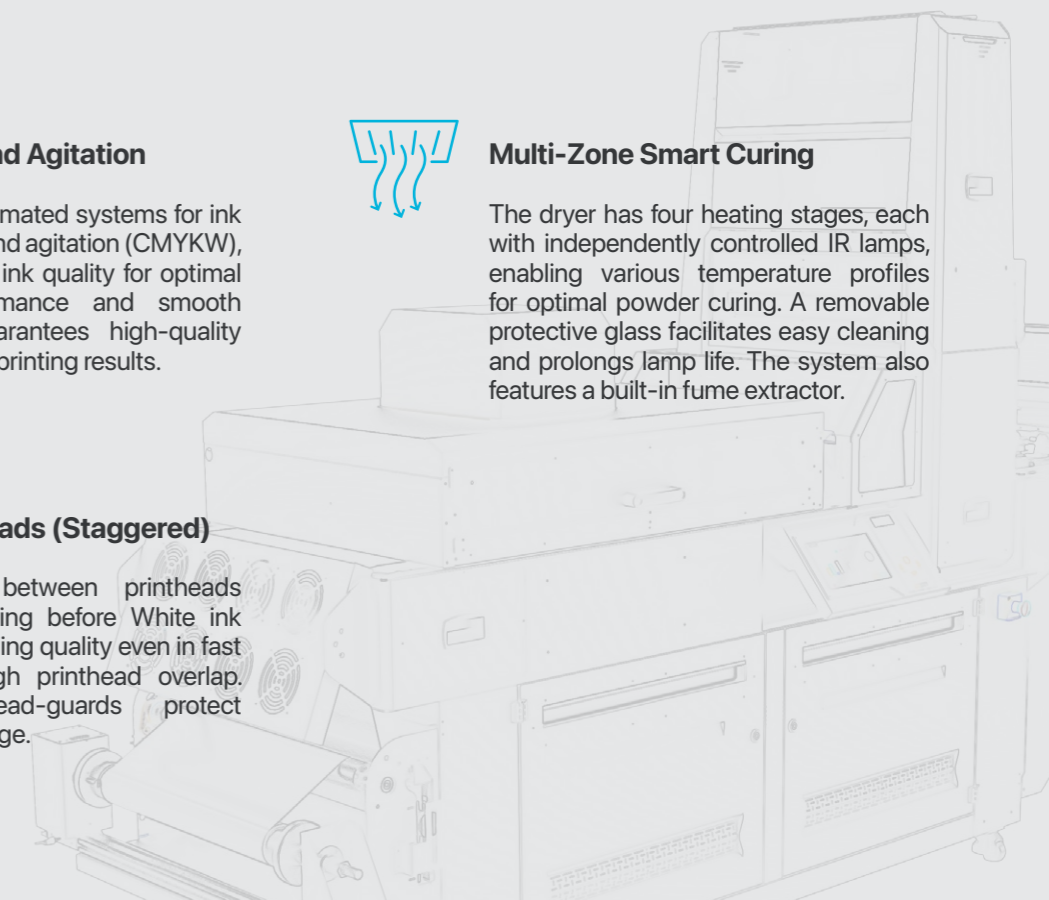
## Multi-Zone Smart Curing

The dryer has four heating stages, each with independently controlled IR lamps, enabling various temperature profiles for optimal powder curing. A removable protective glass facilitates easy cleaning and prolongs lamp life. The system also features a built-in fume extractor.



## 4x i3200 Printheads (Staggered)

Optimal spacing between printheads ensures CMYK drying before White ink application, maintaining quality even in fast print modes through printhead overlap. Integrated printhead-guards protect against media damage.



# consumables

Optimized performance of **Inks**, **Films**, and **Powder**, delivers print consistency, color accuracy, and exceptional wash fastness.

<b>Inks</b>	CMYKW - 1lt bottles
<b>Films</b>	60cm x 100m - Hot/Cold Peel
<b>Powder</b>	1kg bags

# filmJet



# tech specs

<b>SYSTEM SET-UP</b>	All-in-One System (Printer - Powder applicator - Dryer)
<b>PRINT HEADS</b>	4 x i3200 (2x CMYK - 2x White)
<b>PRINT WIDTH</b>	60 cm (24 in)
<b>INK SUPPLY</b>	Bulk Ink with 2x 2lt White and 1lt CMYK tanks
<b>PC REQUIREMENTS</b>	Intel Core i5 or better CPU, 8 GB RAM, 1TB HD drive, 24" or larger monitor
<b>POWER REQUIREMENTS</b>	3-Phase 380V 10kVA
<b>OPERATING CONDITIONS</b>	20-25 °C (68-77 °F), 50-60% RH
<b>AUTOMATION FEATURES</b>	Smart System Control, Constant Film Tension, Auto Powder Application and Recycling, Air/Vacuum Excess Powder Removal, Multi Zone Smart Curing, Auto White Ink Circulation and CMYK Inks Agitation
<b>SPEED - PRODUCTION</b>	360x1200dpi 2pass - 24m <sup>2</sup> /h 720x2400dpi 4pass - 18m <sup>2</sup> /h 720x3600dpi 6pass - 14m <sup>2</sup> /h
<b>OVERALL DIMENSIONS</b>	Width 181cm, Length 338cm, Height 220cm (Delivered in two parts, each able to fit through standard doors)
<b>WARRANTY</b>	1 Year Full Warranty (print heads included when original supplies are used)

\*Equipment features and technical specifications are subject to change without prior notice.  
Production speed may vary due to environmental conditions.